

WAAS CH 50131 W17A	APP CRS 176°	Rwy Idg 8301 TDZE 35 Apt Elev 36
--	------------------------	---

RNAV (GPS) Y RWY 17R
VALLEY INTL (HRL)

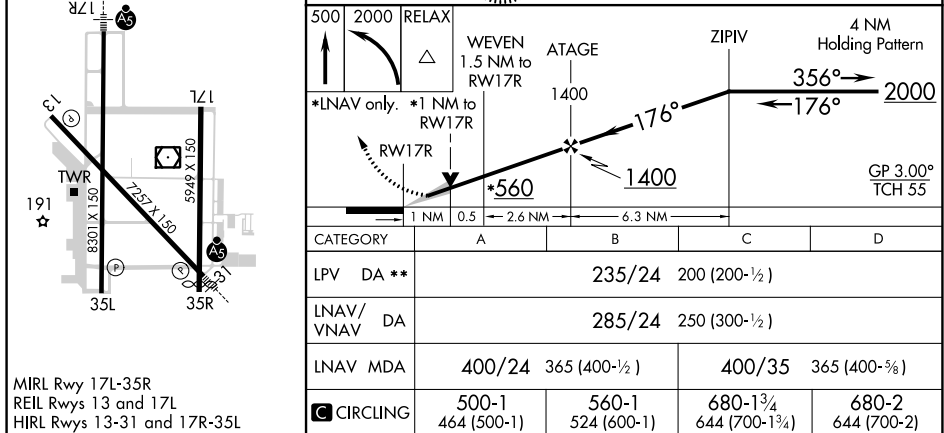
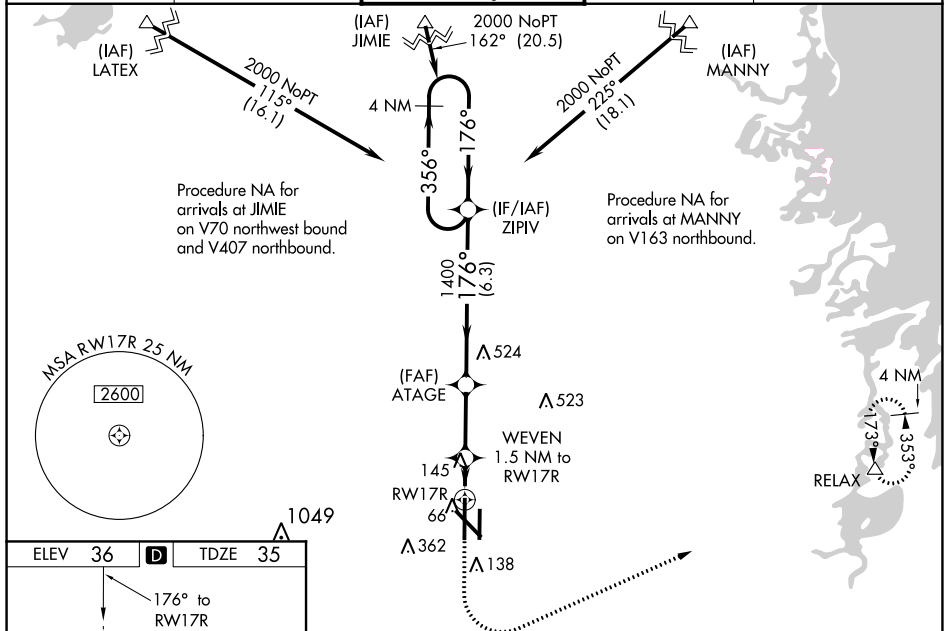
▼ For uncompensated Baro-VNAV systems, LNAV/VNAV NA below 2°C (36°F) or above 54°C (130°F). DME/DME RNP-0.3 NA. When local altimeter setting not received, use Port Isabel altimeter setting: increase LPV DA to 277 feet; increase LNAV/VNAV DA to 327 feet; increase all MDAs 60 feet and visibility Cats C and D ¼ SM. For inoperative MALSR, increase LNAV/VNAV all Cats visibility to RVR 4000, LNAV all Cats visibility to RVR 5500. For inoperative MALSR, when using Port Isabel altimeter setting, increase LNAV/VNAV all Cats visibility to RVR 4500, LNAV Cats A and B visibility to RVR 5500 and Cats C and D visibility to 1¼ mile. Baro-VNAV NA with Port Isabel altimeter setting. VDP NA with Port Isabel altimeter setting. **RVR 1800 authorized with use of FD or AP or HUD to DA, NA when using Port Isabel altimeter setting.

MALSR



MISSED APPROACH:
Climb to 500 then
climbing left turn to
2000 direct RELAX
and hold

ATIS 124.85	VALLEY APP CON 120.7 279.5	HARLINGEN TOWER★ 119.3(CTAF) 0 317.6	GND CON 121.7	UNICOM 122.95
----------------	-------------------------------	---	------------------	------------------



HARLINGEN, TEXAS

Amdt 2C 08OCT20

VALLEY INTL (HRL)

26°14'N-97°39'W

RNAV (GPS) Y RWY 17R