
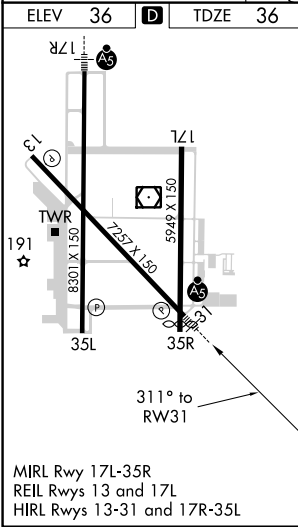
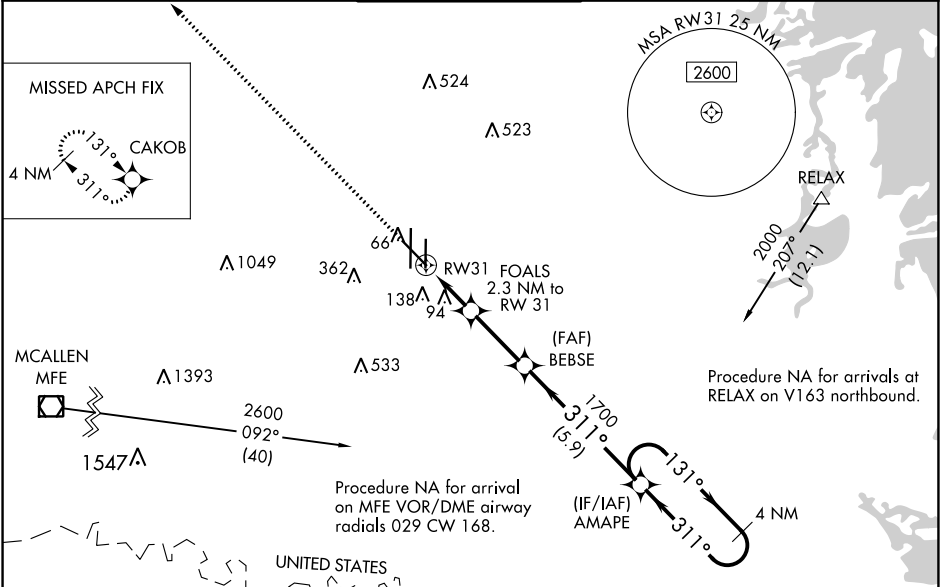


WAAS CH <b>82530</b> <b>W31A</b>	APP CRS <b>311°</b>	Rwy Idg <b>7257</b> TDZE <b>36</b> Apt Elev <b>36</b>
--	------------------------	---

RNAV (GPS) Y RWY 31

VALLEY INTL (HRL)

▼ For uncompensated Baro-VNAV systems, LNAV/VNAV NA below 2°C (36°F) or above 54°C (130°F). DME/DME RNP-0.3 NA.			MALSR 	MISSED APPROACH: Climb to 2000 direct CAKOB and hold.
ATIS <b>124.85</b>	VALLEY APP CON <b>120.7 279.5</b>	HARLINGEN TOWER ★ <b>119.3 (CTAF) 0 317.6</b>	GND CON <b>121.7</b>	UNICOM <b>122.95</b>



ELEV 36	D	TDZE 36
UNITED STATES		MEXICO
2000	CAKOB	4 NM Holding Pattern
*LNAV only		FOALS 2.3 NM to RW31
*1 NM to RW31		BEBSE 1700
RW31		*820
1 NM		1.3 NM
2.8 NM		5.9 NM
CATEGORY	A	B
LPV DA	236-½	200 (200-½)
LNAV/VNAV DA	286-½	250 (300-½)
LNAV MDA	420-½	384 (400-½)
CIRCLING	500-1 464 (500-1)	560-1 524 (600-1)
	680-1¾ 644 (700-1¾)	680-2 644 (700-2)