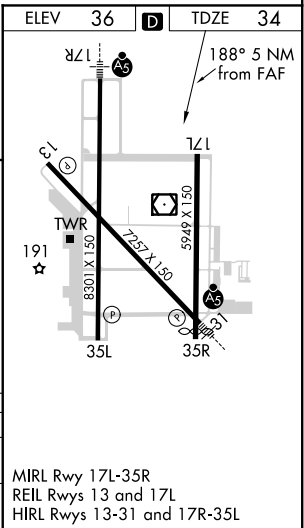
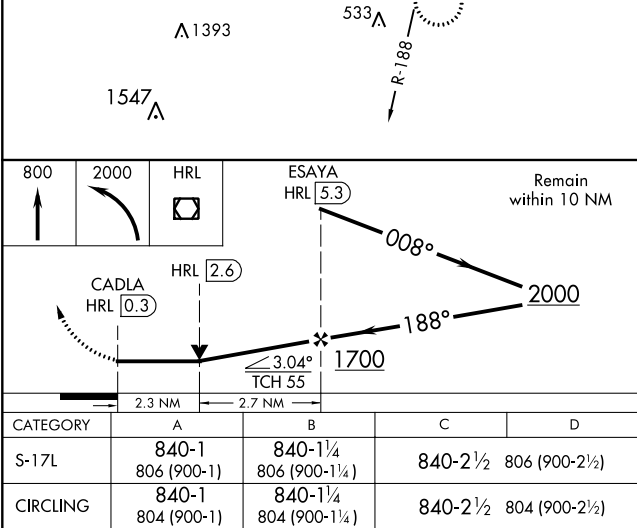
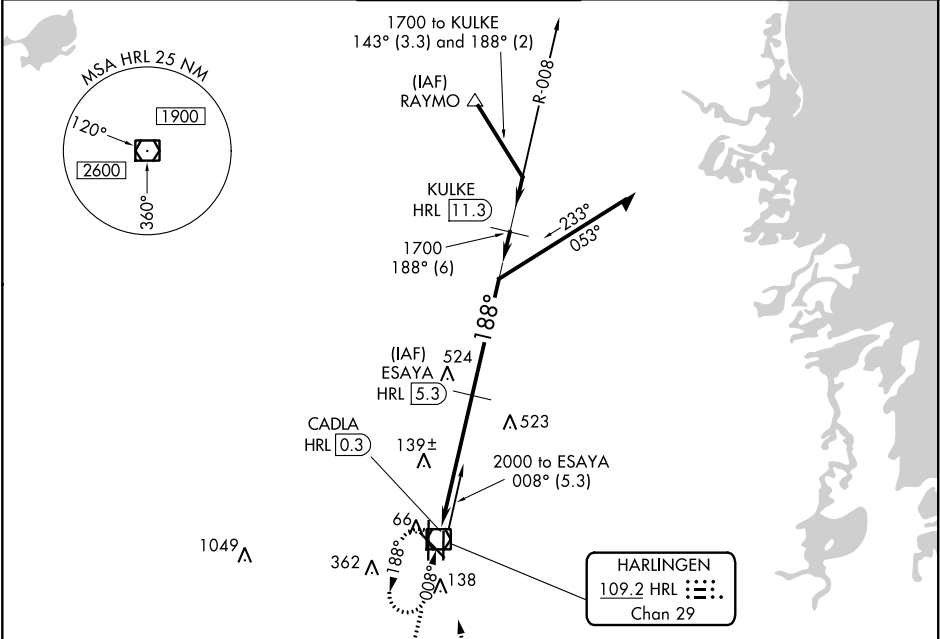


VOR/DME HRL	APP CRS	Rwy Idg
<u>109.2</u>	<u>188°</u>	<b>5949</b>
Chan <b>29</b>		TDZE <b>34</b>
		Apt Elev <b>36</b>

VOR/DME RWY 17L  
VALLEY INTL (HRL)

MISSED APPROACH: Climb to 800 then climbing left turn to 2000 direct HRL VOR/DME and hold.

ATIS <b>124.85</b>	VALLEY APP CON <b>120.7 279.5</b>	HARLINGEN TOWER ★ <b>119.3 (CTAF) 0 317.6</b>	GND CON <b>121.7</b>	UNICOM <b>122.95</b>
-----------------------	--------------------------------------	--	-------------------------	-------------------------



SC-3, 03 DEC 2020 to 31 DEC 2020

SC-3, 03 DEC 2020 to 31 DEC 2020