

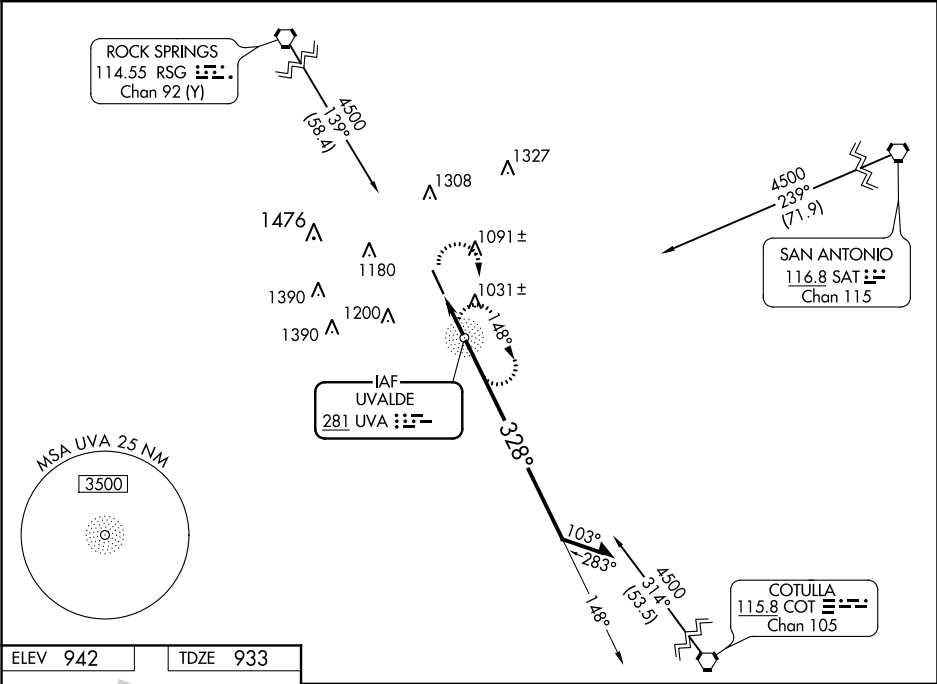
NDB UVA	APP CRS	Rwy ldg	5256
281	328°	TDZE	933
		Apt Elev	942

NDB RWY 33  
GARNER FIELD (UVA)

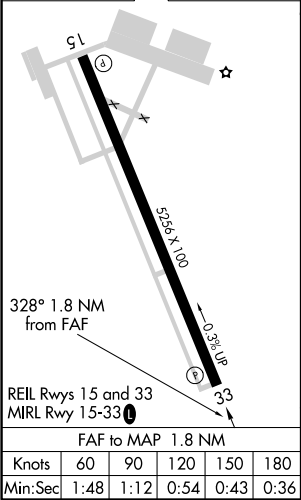
**NA** Obtain local altimeter setting on CTAF; when not received, use South Texas Rgnl at Hondo altimeter setting.

MISSED APPROACH: Climbing right turn to 2900 direct UVA NDB and hold.

AWOS-3 124.175	HOUSTON CENTER 134.95 269.4	UNICOM 122.8 (CTAF) 0
-------------------	--------------------------------	--------------------------



ELEV 942	TDZE 933
----------	----------



2900 UVA

VGSI and descent angles not coincident (VGSI Angle 3.00/TCH 35).

UVA NDB

Remain within 10 NM

148°

328°

1600

3.29° TCH 50

1.8 NM

CATEGORY	A	B	C	D
S-33	1340-1	407 (400-1)	1340-1¼	407 (400-1¼)
CIRCLING	1340-1 398 (400-1)	1460-1 518 (600-1)	1460-1½ 518 (600-1½)	1500-2 558 (600-2)
SOUTH TEXAS REGIONAL AT HONDO ALTIMETER SETTING MINIMUMS				
S-33	1440-1	507 (500-1)	1440-1½	507 (500-1½)
CIRCLING	1440-1 498 (500-1)	1560-1 618 (700-1)	1560-1¾ 618 (700-1¾)	1600-2 658 (700-2)

SC-3, 03 DEC 2020 to 31 DEC 2020

SC-3, 03 DEC 2020 to 31 DEC 2020