

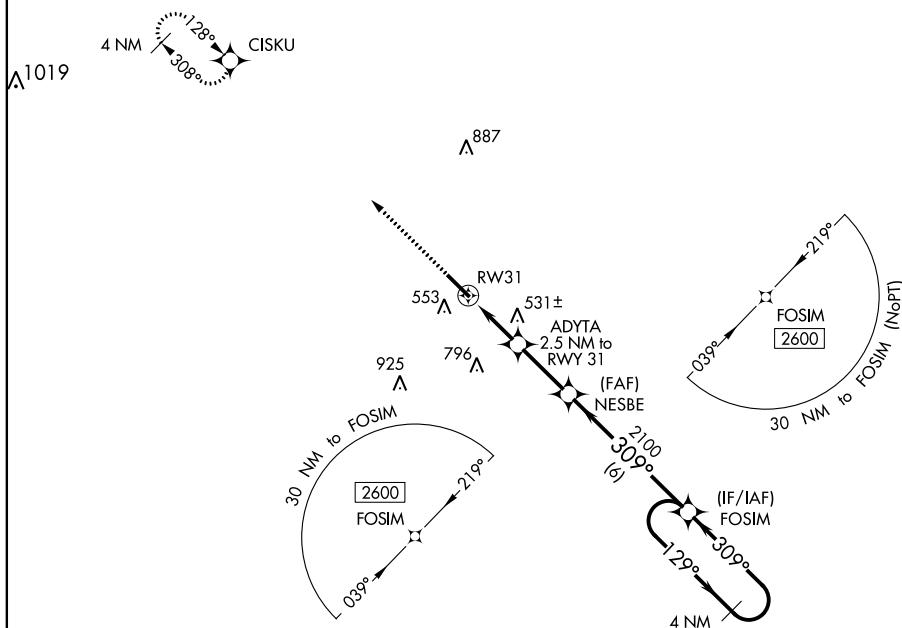
WAAS CH 42836 W31A	APP CRS 309°	Rwy Idg 6005 TDZE 464 Apt Elev 474
--	------------------------	---

RNAV (GPS) RWY 31
COTULLA-LA SALLE COUNTY (COT)

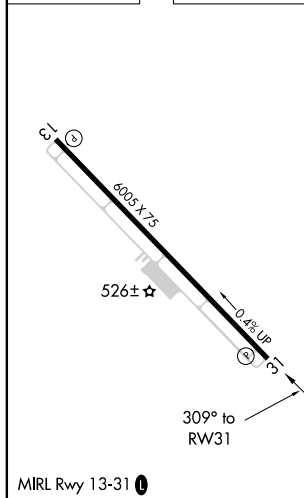
T For uncompensated Baro-VNAV systems, LNAV/VNAV NA below -5°C (23°F) or above 54°C (130°F). DME/DME RNP-0.3 NA.

MISSED APPROACH: Climb to 2600 direct CISKU and hold.

ASOS 118.325	HOUSTON CENTER 134.6 322.5	UNICOM 122.7 (CTAF) 0
------------------------	--------------------------------------	---------------------------------



ELEV 474		TDZE 464
----------	--	----------



FOSIM Holding Pattern

Heading: 2600
Turn: 309°
Heading: 2100
Turn: 129°
Heading: 2600

NESBE 2100
ADYTA 2.5 NM to RWY 31
FOSIM

*1 NM to RWY31
*1.5 NM
*2.5 NM
*1280
*1280
*1280

RWY31

CIRCLING GP 3.00° TCH 45

CATEGORY	A	B	C	D
LPV DA	714-¾	250 (300-¾)		NA
LNAV/VNAV DA	714-¾	250 (300-¾)		NA
LNAV MDA	800-1	336 (400-1)		NA
C CIRCLING	920-1 446 (500-1)	940-1 466 (500-1)	1120-1¾ 646 (700-1¾)	NA