

ILS or LOC/DME RWY 13R

LOC I-NQI
110.9

APCH CRS
130°

Rwy Idg
8000
TDZE
50
Arpt Elev
50

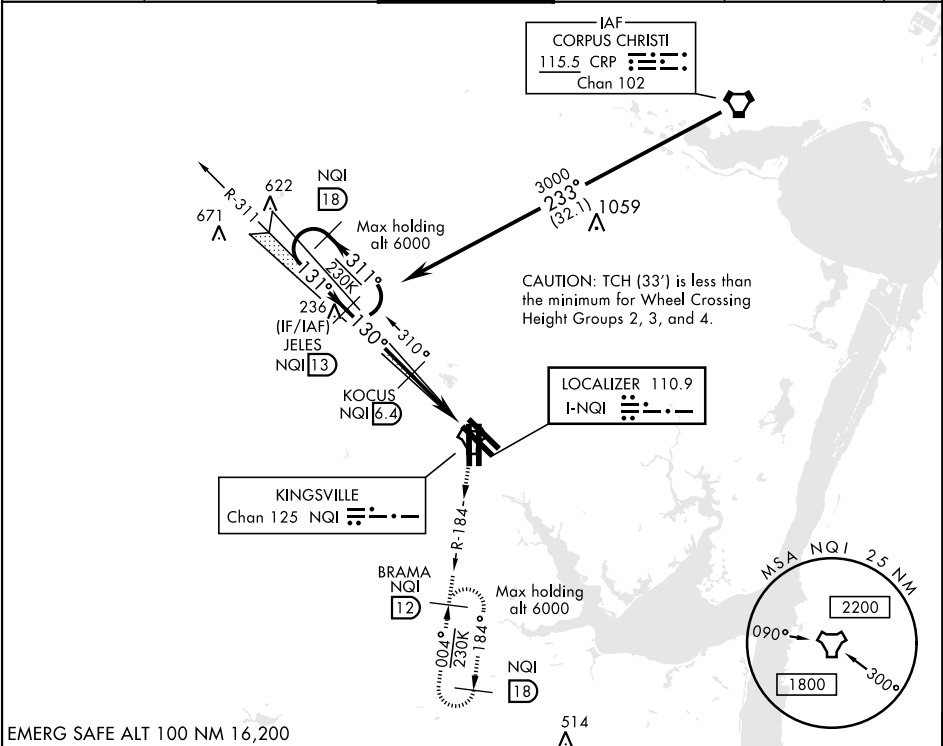
AL-918 [USN]

KINGSVILLE NAS (KNQI)

TACAN required.

MISSED APPROACH: Climbing right turn to 3000 to intercept NQI TACAN R-184 to BRAMA and hold.

ATIS★ 276.2	KINGSVILLE APP CON 119.9 290.45	KINGSVILLE TOWER★ 124.1 377.05	GND CON 239.05	CLNC DEL 328.4	ASR/ PAR
----------------	------------------------------------	-----------------------------------	-------------------	-------------------	-------------



EMERG SAFE ALT 100 NM 16,200

Glideslope autocoupled NA below 439' MSL.

3000 NQI R-184

BRAMA NQI 12

ELEV 50 TDZE 50

130° 5.4 NM from FAF

46° 131° 13R 13L 18 12 35L 35R 31L 31R

198 TWR

8000 x 200 6000 x 200 8000 x 200

35L 35R (A1)

HIRL all Rwy TDZL/CL Rwy 17L

CATEGORY	A	B	C	D
S-ILS 13R	250-¾ 200		(200-¾)	
S-LOC 13R	480-1	430 (500-1)	480-1¼ 430	(500-1¼)
CIRCLING	540-1	490 (500-1)	760-2 710 (800-2)	760-2¼ 710 (800-2¼)

ILS or LOC/DME RWY 13R

SC-3, 03 DEC 2020 to 31 DEC 2020

SC-3, 03 DEC 2020 to 31 DEC 2020