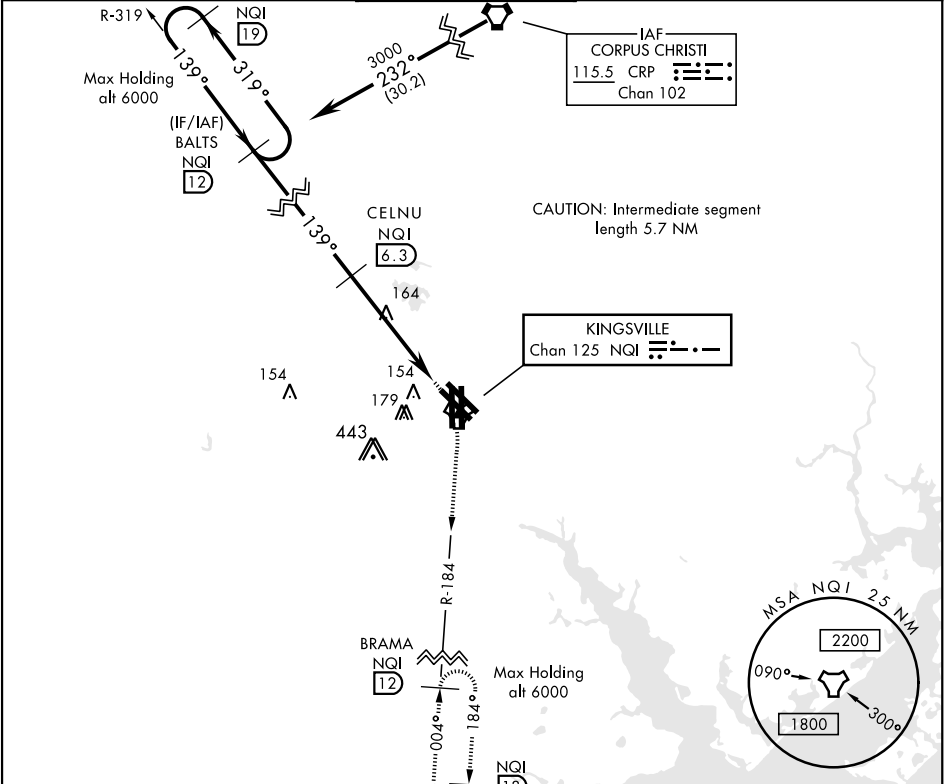


TACAN RWY 13L/R

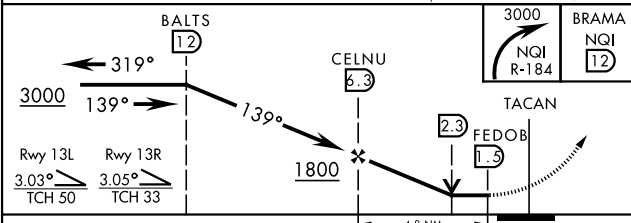
TACAN NQI	APCH CRS	Rwy 13L Idg	8000	Rwy 13R Idg	8000
Chan 125	139°	TDZE	49	TDZE	50
		Arpt Elev	50	Arpt Elev	50

AL-918 [USN] KINGSVILLE NAS (KNQI)

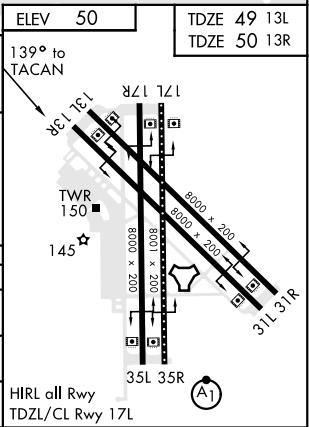
MISSED APPROACH: Climbing right turn to 3000 to intercept NQI TACAN R-184 to BRAMA and hold.					
ATIS ★	KINGSVILLE APP CON	KINGSVILLE TOWER ★	GND CON	CLNC DEL	ASR/PAR
276.2	119.9 290.45	124.1 377.05	239.05	328.4	



EMERG SAFE ALT 100 NM 16,200



CATEGORY	A	B	C	D
S-13L	520-1 471 (500-1)	520-1 471 (500-1)	520-1 471 (500-1)	520-1 471 (500-1)
S-13R	520-1 470 (500-1)	520-1 470 (500-1)	520-1 470 (500-1)	520-1 470 (500-1)
CIRCLING	540-1 490 (500-1)	540-1 490 (500-1)	760-2 710 (800-2)	760-2 710 (800-2)



TACAN RWY 13L/R

SC-3, 03 DEC 2020 to 31 DEC 2020

SC-3, 03 DEC 2020 to 31 DEC 2020