

TACAN RWY 17L

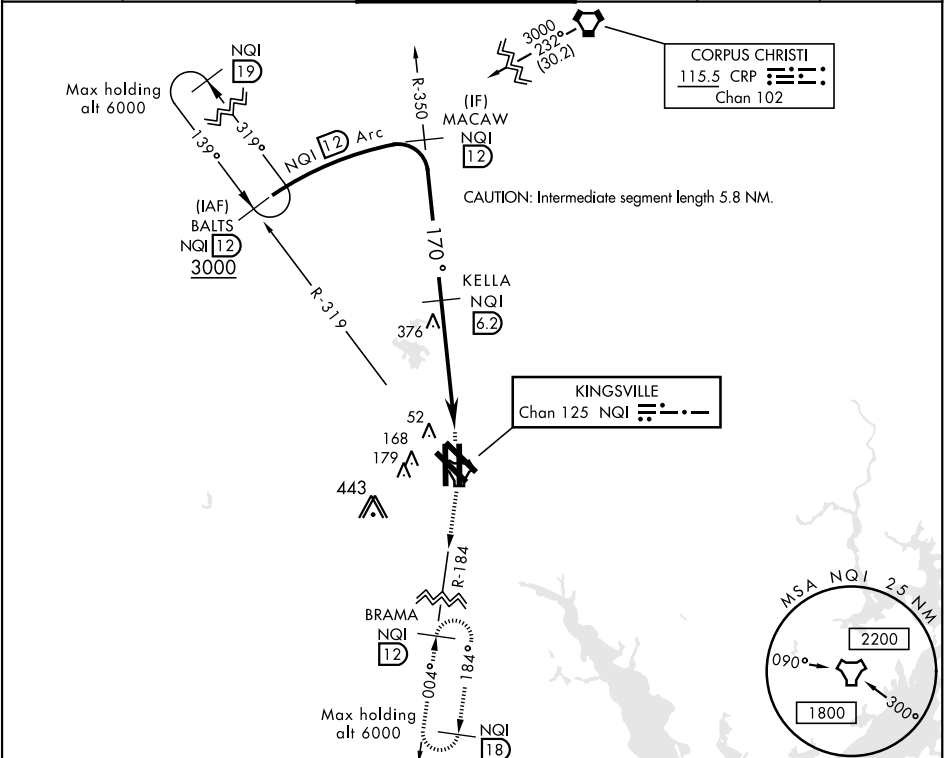
TACAN NQI	APCH CRS	Rwy Idg	8001
Chan 125	170°	TDZE	49
		Arprt Elev	50

AL-918 [USN]

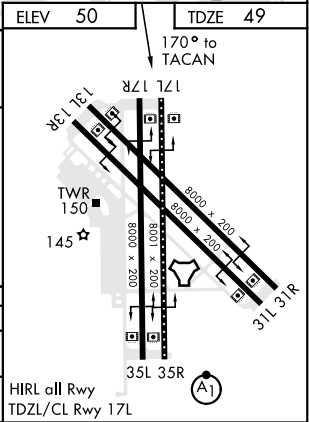
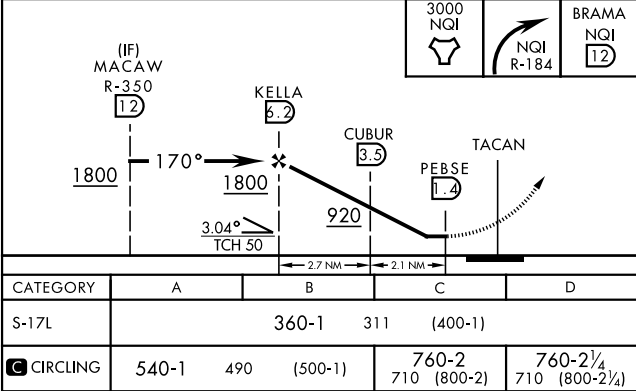
KINGSVILLE NAS (KNQI)

	MISSED APPROACH: Climb to 3000 direct NQI TACAN and climbing right turn to intercept NQI R-184 to BRAMA and hold.
--	---

ATIS ★ 276.2	KINGSVILLE APP CON 119.9 290.45	KINGSVILLE TOWER ★ 124.1 377.05	GND CON 239.05	CLNC DEL 328.4	ASR/PAR
-----------------	------------------------------------	------------------------------------	-------------------	-------------------	---------



EMERG SAFE ALT 100 NM 16,200



TACAN RWY 17L

SC-3, 03 DEC 2020 to 31 DEC 2020

SC-3, 03 DEC 2020 to 31 DEC 2020