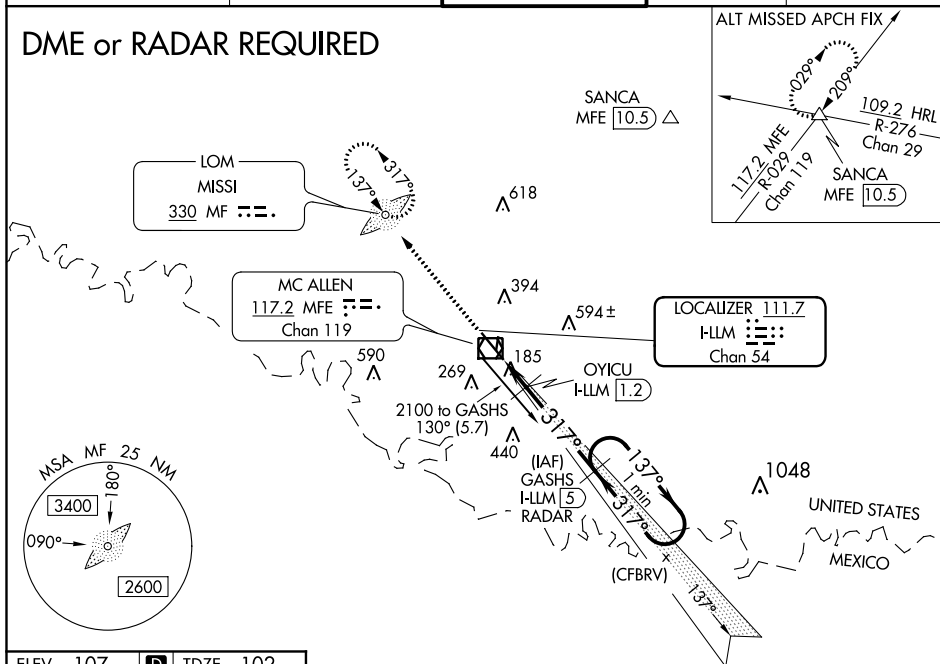


ILS or LOC RWY 32  
MC ALLEN MILLER INTL (MFE)

**MISSED APPROACH:** Climb to 2100 direct MF LOM and hold

UNICOM  
122.95

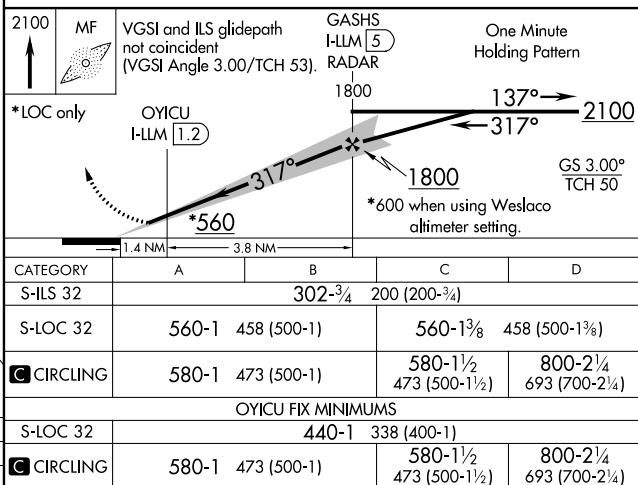
## DME or RADAR REQUIRED



REIL Rwy 32  
 HIRL Rwy 14-32 (1)  
 MIRL Rwy 18-36 (1)

FAF to MAP 5.2 NM

	Knots	60	90	120	150	180
Min:Sec	5:12	3:28	2:36	2:05	1:44	



SC-3, 03 DEC 2020 to 31 DEC 2020