

WAAS  
CH **78001**  
W32A

APP CRS  
**317°**

Rwy Idg  
TDZE **102**  
Apt Elev **107**

RNAV (GPS) RWY 32

MC ALLEN MILLER INTL (MFE)

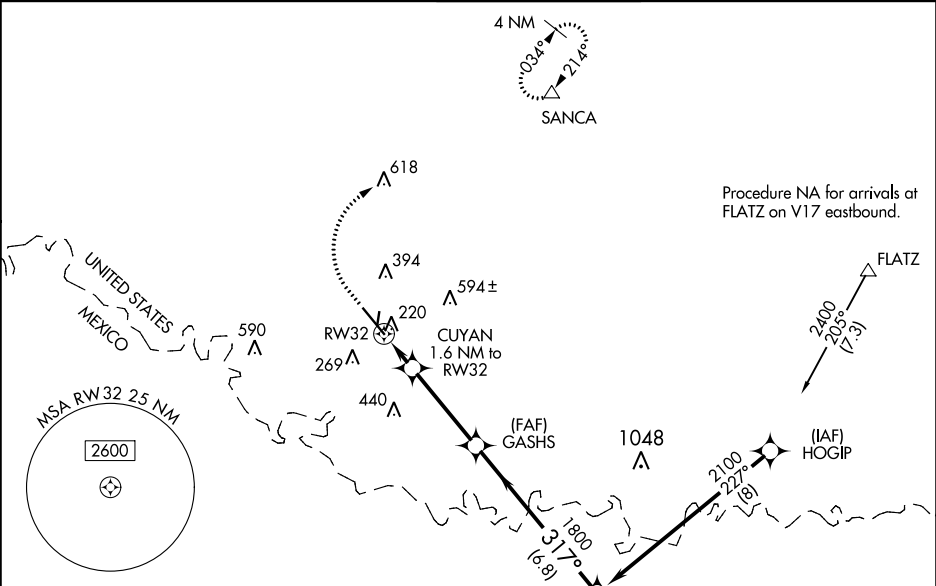
▼

▲

For uncompensated Baro-VNAV systems, LNAV/VNAV NA below 1°C (34°F) or above 54°C (130°F). Circling NA northeast of Rwy 14-32. DME/DME RNP-0.3 NA. When local altimeter setting not received, use Weslaco altimeter setting: increase all DA 39 feet and LNAV/VNAV all Cat visibility ¼ mile; increase all MDA 40 feet and LNAV Cat C/D visibility ½ mile. Baro-VNAV and VDP NA when using Weslaco altimeter setting.

MISSED APPROACH: Climb to 800 then climbing right turn to 2000 direct SANCA and hold.

ATIS <b>128.5</b>	VALLEY APP CON <b>121.0 377.2</b>	MC ALLEN TOWER * <b>118.5 (CTAF) 256.9</b>	GND CON <b>121.8</b>	UNICOM <b>122.95</b>
----------------------	--------------------------------------	---	-------------------------	-------------------------



ELEV 107

D

TDZE 102

800

2000

SANCA

VGSI and RNAV glidepath not coincident (VGSI Angle 3.00/TCH 53).

\*LNAV only

GASHS

FOVUD

CUYAN

1.6 NM to RW32

RW32

1 NM to RW32

1800

2100

317°

GP 3.00°

TCH 50

CATEGORY	A	B	C	D
LPV DA	302-¾	200 (200-¾)		
LNAV/VNAV DA	391-⅞	289 (300-⅞)		
LNAV MDA	480-1	378 (400-1)		
CIRCLING	580-1	473 (500-1)	580-1½ 473 (500-1½)	800-2¼ 693 (700-2¼)

REIL Rwy 32

HIRL Rwy 14-32

MIRL Rwy 18-36

317° to RW32