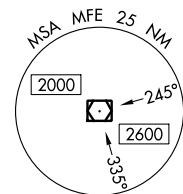


VOR RWY 32
MC ALLEN MILLER INTL (MFE)

MISSED APPROACH: Climb to 900 then climbing right turn to 2100 direct MFE VOR/DME.

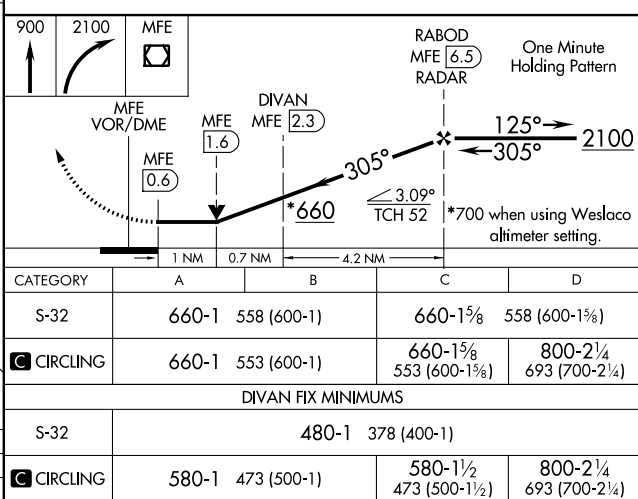
DME or RADAR REQUIRED



REIL Rwy 32
HIRL Rwy 14-32
MIRL Rwy 18-36

FAF to MAP 5.9 NM

Knots	60	90	120	150	180
Min:Sec	5:54	3:56	2:57	2:22	1:58



SC-3, 03 DEC 2020 to 31 DEC 2020