

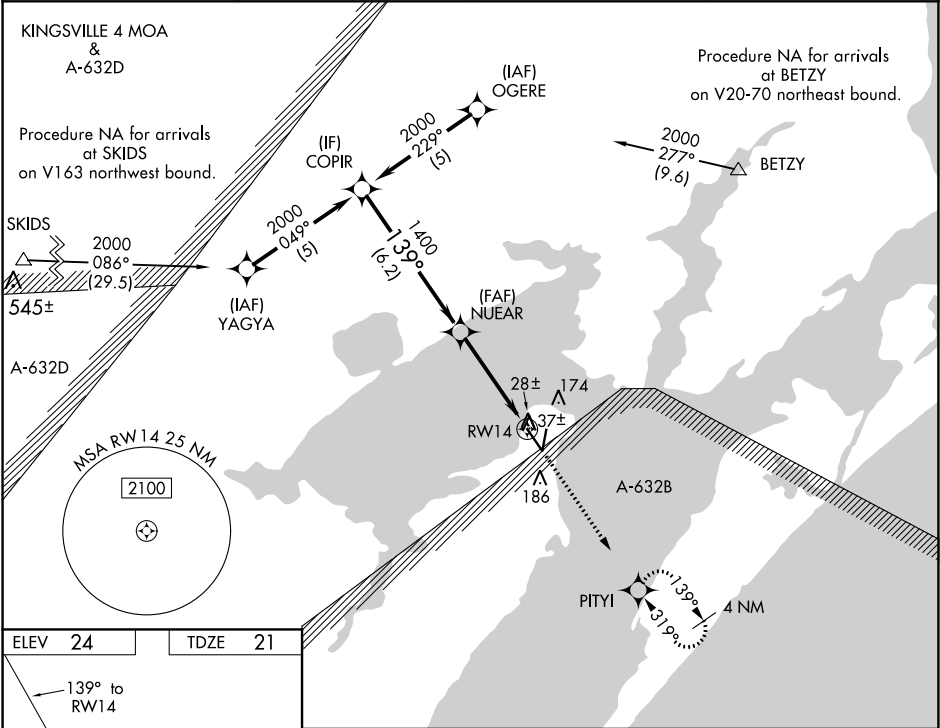
WAAS CH 53617 W14A	APP CRS 139°	Rwy Idg 5608 TDZE 21 Apt Elev 24
--	------------------------	---

RNAV (GPS) RWY 14
ARANSAS COUNTY (RKP)

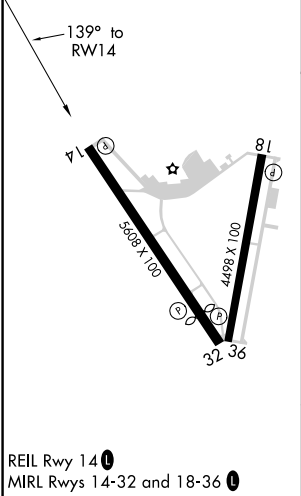
⚠ Baro-VNAV NA when using Ingleside altimeter setting. For uncompensated Baro-VNAV systems, LNAV/VNAV NA below -15°C (5°F) or above 54°C (130°F). DME/DME RNP-0.3 NA. Helicopter visibility reduction below ¾ SM NA. When local altimeter setting not received, use Ingleside altimeter setting and increase all DA 33 feet and all MDA 40 feet increase LNAV/VNAV all Cats visibility ¼ mile. VDP NA with Ingleside altimeter setting.

MISSED APPROACH:
Climb to 2000 direct PITYI and hold.

ASOS 119.275	CORPUS APP CON 120.9 348.725	CLNC DEL 121.7	UNICOM 123.05 (CTAF) 0
------------------------	--	--------------------------	----------------------------------



ELEV 24	TDZE 21
----------------	----------------



Procedure Turn NA		COPIR			* LNAV only		2000 ↑		PITYI ✦		
2000		139°		NUEAR 1400		* 0.9 NM to RW14		RW14			
GP 3.00° TCH 35		1400		6.2 NM		3.3 NM		0.9 NM			
CATEGORY		A		B		C		D			
LPV DA		271-1		250 (300-1)						NA	
LNAV/ VNAV DA		378-1¼		357 (400-1¼)						NA	
LNAV MDA		320-1		299 (300-1)						NA	
CIRCLING		500-1		476 (500-1)		500-1½ 476 (500-1½)				NA	

SC-3, 03 DEC 2020 to 31 DEC 2020

SC-3, 03 DEC 2020 to 31 DEC 2020