

WAAS CH 53635 W18A	APP CRS 175°	Rwy Idg 6080 TDZE 42 Apt Elev 46
--	------------------------	---

RNAV (GPS) RWY 18

CORPUS CHRISTI INTL (CRP)

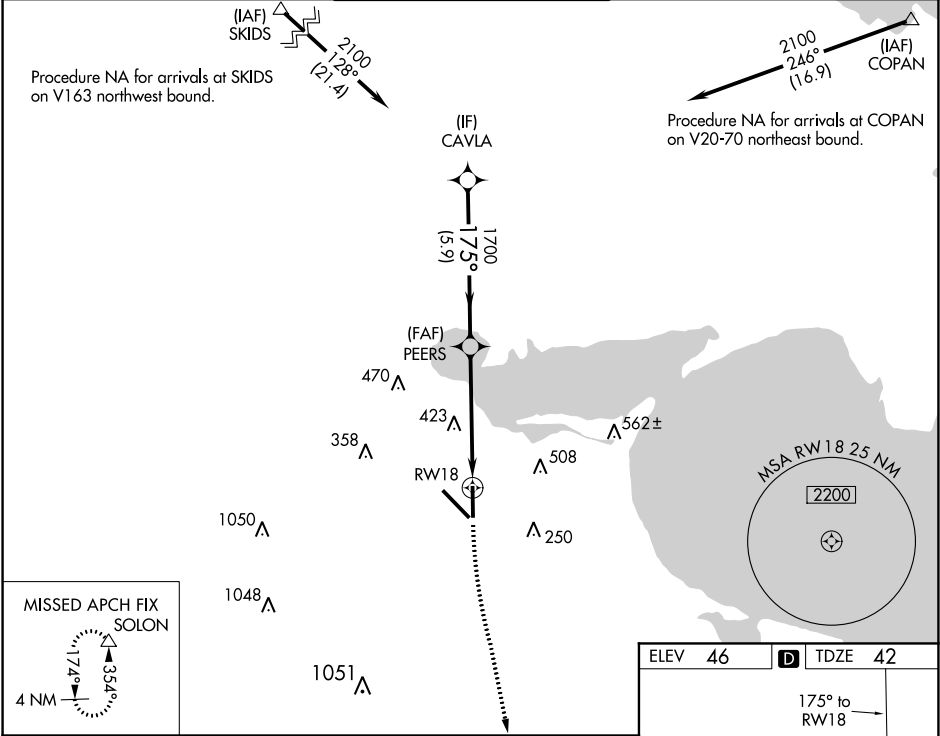
For uncompensated Baro-VNAV systems, LNAV/VNAV NA below 1°C (34°F) or above 54°C (130°F). DME/DME RNP-0.3 NA.
For inop MALSR increase LPV Cat E visibility to ¾ mile, LNAV/VNAV Cat E visibility to 1 mile and LNAV Cat C/D/E visibility to 1¼ mile.

MALSR

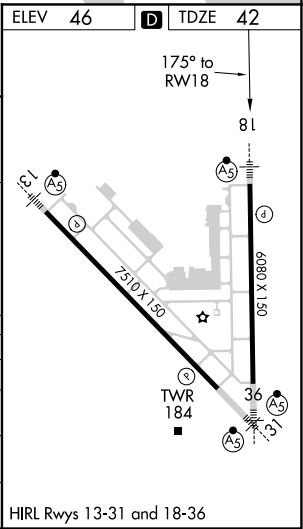
AS

MISSED APPROACH: Climb to 500 then climbing left turn to 2000 direct SOLON and hold.

ATIS 126.8	CORPUS APP CON 120.9 348.725	CORPUS TOWER 119.4 257.8	GND CON 121.9 269.15	CLNC DEL 118.55
----------------------	--	------------------------------------	--------------------------------	---------------------------



CAVLA		PEERS		RWY 18	
2100		1700		500	
175°		1700		2000	
GP 3.00°		*1.8 NM to RWY 18		*LNAV only.	
TCH 50		5.9 NM		3.3 NM	
				1.8 NM	
CATEGORY	A	B	C	D	E
LPV DA	242-½		200 (200-½)		
LNAV/VNAV DA	345-½		303 (300-½)		
LNAV MDA	660-½	618 (700-½)	660-1⅜	618 (700-1⅜)	
CIRCLING	660-1	614 (700-1)	820-2¼ 774 (800-2¼)	820-2½ 774 (800-2½)	820-2¾ 774 (800-2¾)



SC-3, 03 DEC 2020 to 31 DEC 2020

SC-3, 03 DEC 2020 to 31 DEC 2020