

WAAS CH <b>97515</b> <b>W13A</b>	APP CRS <b>132°</b>	Rwy Idg <b>7510</b> TDZE <b>46</b> Apt Elev <b>46</b>
----------------------------------------	------------------------	-------------------------------------------------------------

RNAV (GPS) Y RWY 13  
CORPUS CHRISTI INTL (CRP)

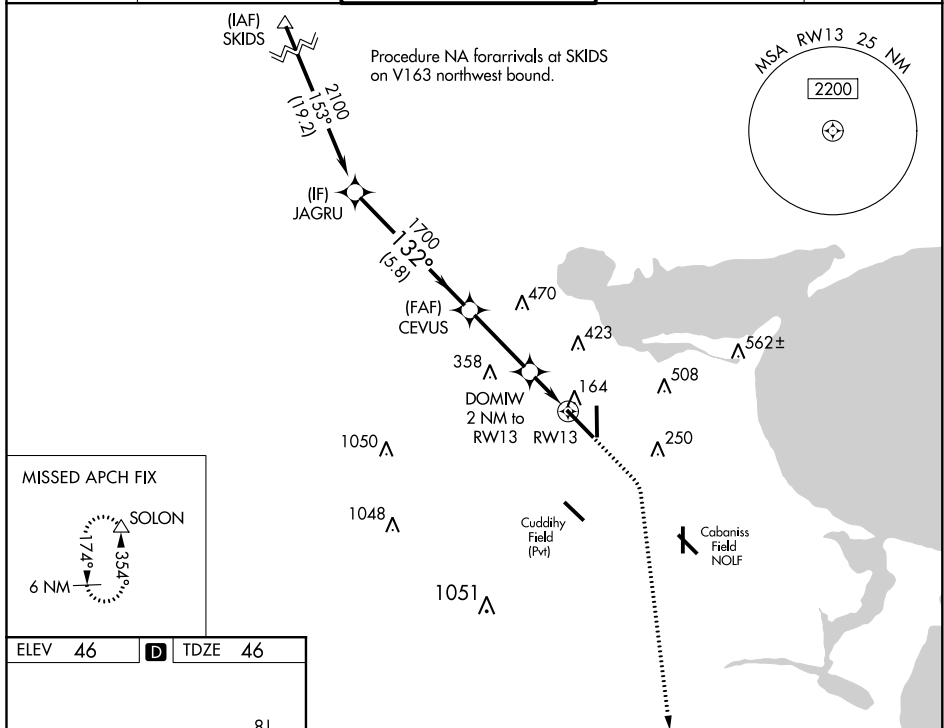
**A** For uncompensated Baro-VNAV systems, LNAV/VNAV NA below -1°C (31°F) or above 54°C (130°F). DME/DME RNP-0.3 NA. For inop MALSR increase LPV Cat E visibility to RVR 4000, LNAV/VNAV all Cats visibility to RVR 4500, and LNAV Cats C/D/E visibility to RVR 5500.  
\*\*RVR 1800 authorized with use of FD or AP or HUD to DA.

MALSR



**MISSED APPROACH:** Climb to 500 then climbing right turn to 2000 direct SOLON and hold.

ATIS 126.8	CORPUS APP CON 120.9 348.725	CORPUS TOWER 119.4 257.8	GND CON 121.9 269.15	CLNC DEL 118.55
---------------	---------------------------------	-----------------------------	-------------------------	--------------------



ELEV 46	<b>D</b>	TDZE 46
---------	----------	---------

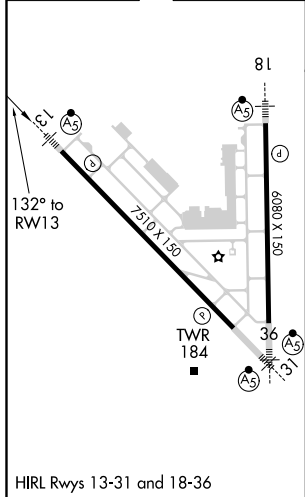


Diagram illustrating a 4th step climb profile. The profile starts at JAGRU (2100) and ends at SOLON (2000). The path is divided into segments A, B, C, D, and E. The diagram shows a 3rd step climb profile (dashed line) and a 2nd step climb profile (dotted line). Key points include CEVUS (1700), DOMIW (2 NM to RW13), and RW13 (1 NM to RW13). The diagram also shows a 1 NM to RW13 segment. The diagram includes a legend for symbols: a vertical arrow for 500, a curved arrow for 2000, and a triangle for SOLON. The diagram also includes a note: \*LNAV only.

Category	A	B	C	D	E
LPV DA**	246/24 200 (200-½)				
LNAV/DA VNAV	325/24 279 (300-½)				
LNAV MDA	420/24 374 (400-½)		420/35 374 (400-¾)		
CIRCLING	500-1 454 (500-1)	580-1 534 (600-1)	820-2¼ 774 (800-2¼)	820-2½ 774 (800-2½)	820-2¾ 774 (800-2¾)