

WAAS CH 60914 W31A	APP CRS 312°	Rwy Idg 7510 TDZE 43 Apt Elev 46
--	------------------------	---

RNAV (GPS) Y RWY 31

CORPUS CHRISTI INTL (CRP)

▼

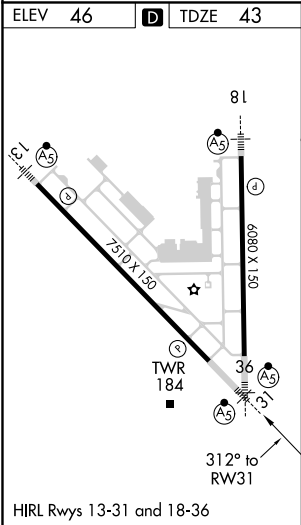
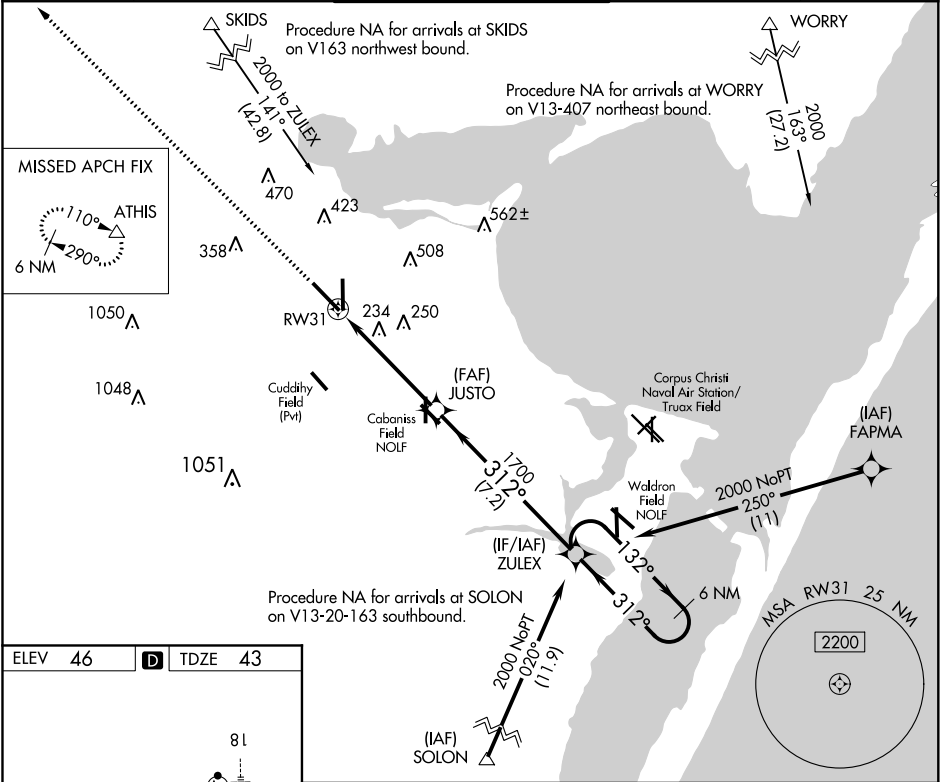
▲

Procedure NA when Cabaniss Field traffic patterns active. DME/DME RNP-0.3 NA. For uncompensated Baro-VNAV systems, LNAV/VNAV NA below -1°C (31°F) or above 54°C (130°F). For inop MALSR, increase LPV Cat E visibility to ¾ mile, LNAV/VNAV all Cats visibility to 1 mile, and LNAV Cat E visibility to 1 ¾ mile.

MALSR

MISSED APPROACH:
Climb to 2000 direct
ATHIS and hold.

ATIS 126.8	CORPUS APP CON 120.9 348.725	CORPUS TOWER 119.4 257.8	GND CON 121.9 269.15	CLNC DEL 118.55
----------------------	--	------------------------------------	--------------------------------	---------------------------



2000 ↑ *LNAV only.		ATHIS △		JUSTO 1700		ZULEX 1700		6 NM Holding Pattern 132° → 2000 ← 312° GP 3.00° TCH 50	
		*1.3 NM to RW31		312°					
		RW31		1700					
		1.3 NM		3.8 NM		7.2 NM			
CATEGORY	A		B		C		D		E
LPV DA			243-½		200 (200-½)				
LNAV/VNAV DA			356-⅝		313 (400-⅝)				
LNAV MDA	500-½		457 (500-½)		500-⅞		457 (500-⅞)		
CIRCLING	500-1 454 (500-1)		580-1 534 (600-1)		820-2¼ 774 (800-2¼)		820-2½ 774 (800-2½)		820-2¾ 774 (800-2¾)

SC-3, 03 DEC 2020 to 31 DEC 2020

SC-3, 03 DEC 2020 to 31 DEC 2020