

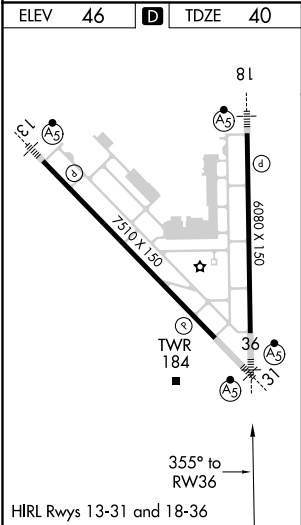
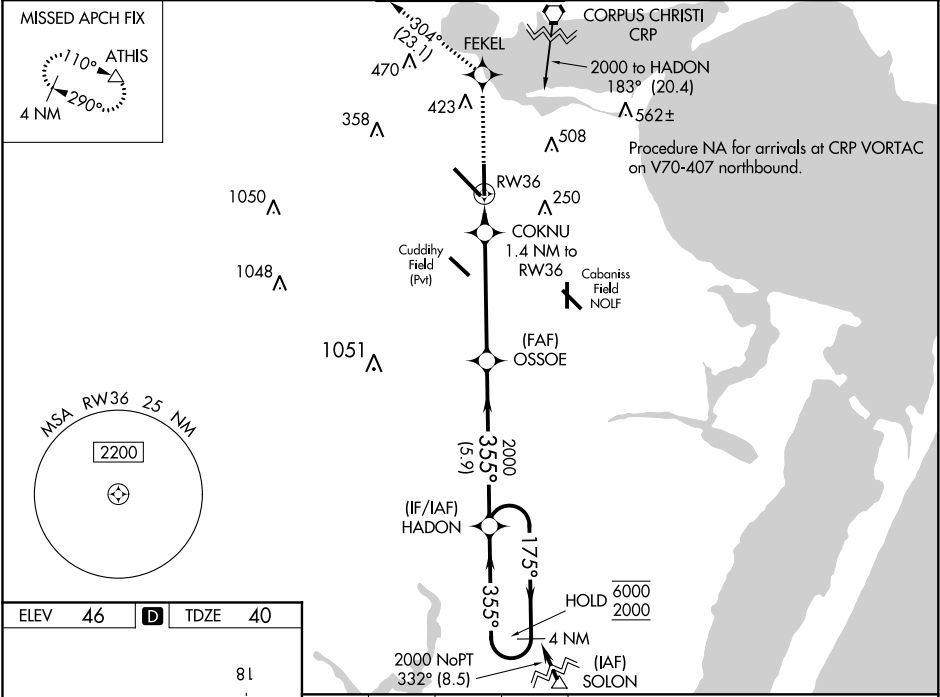
WAAS CH 69617 W36A	APP CRS 355°	Rwy ldg 6080 TDZE 40 Apt Elev 46
--	------------------------	---

RNAV (GPS) Y RWY 36

CORPUS CHRISTI INTL (CRP)

RNP APCH.	For uncompensated Baro-VNAV systems, LNAV/VNAV NA below -1°C or above 54°C. For inop ALS, increase LPV Cat E visibility to RVR 4000, LNAV/VNAV all Cats visibility to RVR 4500 and LNAV Cat E visibility to RVR 6000. # RVR 1800 authorized with use of FD or AP or HUD to DA.	MALSR 	MISSED APPROACH: Climb to 2000 direct FEKEL and on track 304° to ATHIS and hold.
-----------	---	-----------	--

ATIS 126.8	CORPUS APP CON 120.9 348.725	CORPUS TOWER 119.4 257.8	GND CON 121.9 269.15	CLNC DEL 118.55
----------------------	--	------------------------------------	--------------------------------	---------------------------



2000	FEKEL	tr 304°	ATHIS	OSOIE	HADON	4 NM Holding Pattern
*LNAV only.						
2000	COKNU 1.4 NM to RW36	RW36	520*	2000	355° 175° 6000 2000	GP 3.00° TCH 53
1.4 NM 4.6 NM 5.9 NM						
CATEGORY	A	B	C	D	E	
LPV DA #	240/24 200 (200-½)					
LNAV/VNAV DA	356/24 316 (400-½)					
LNAV MDA	440/24	400 (400-½)	440/35	400 (400-½)		
CIRCLING	500-1 454 (500-1)	580-1 534 (600-1)	820-2¼ 774 (800-2¼)	820-2½ 774 (800-2½)	820-2¾ 774 (800-2¾)	

SC-3, 03 DEC 2020 to 31 DEC 2020

SC-3, 03 DEC 2020 to 31 DEC 2020