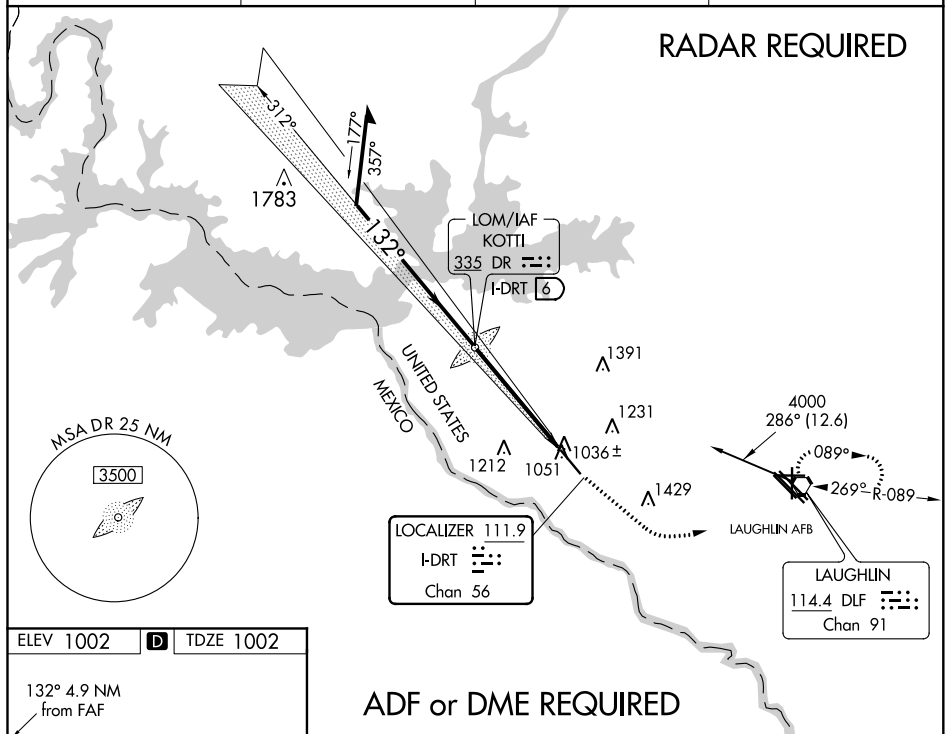


ILS or LOC RWY 13  
DEL RIO INTL (DRT)

**MISSED APPROACH:** Climb to 2000 via heading 122° then climbing left turn to 4000 direct DLF VORTAC and hold. Continue climb-in-hold to 4000.

ASOS <b>118.525</b>	DEL RIO APP CON ★ <b>119.6 259.1</b>	CLNC DEL <b>120,5</b>	UNICOM <b>122.8 (CTAF) 0</b>
------------------------	---	--------------------------	---------------------------------



132° 4.9 NM from FAF

6300 x 100

1060

REIL Rwy 31

HIRL Rwy 13-31

FAF to MAP 4.9 NM					
Knots	60	90	120	150	180
Min:Sec	4:54	3:16	2:27	1:58	1:38

Remain  
within 10 NM

DR  
KOTTI LOM  
I-DRT 6

2000  
↑  
hdg 122°

4000

DLF

312°

3200

132°

2673

I-DRT 2.3

I-DRT 1.2

GS 3.00°  
TCH 48

2700

3.7 NM

CATEGORY	A	B	C	D
S-ILS 13	1202-3/4 200 (200-3/4)			
S-LOC 13	1420-1/2 418 (500-1/2)		1420-3/4 418 (500-3/4)	
CIRCLING	1440-1 438 (500-1)	1460-1 458 (500-1)	1560-1 1/2 558 (600-1/2)	1640-2 638 (700-2)

SC-3, 03 DEC 2020 to 31 DEC 2020

SC-3, 03 DEC 2020 to 31 DEC 2020