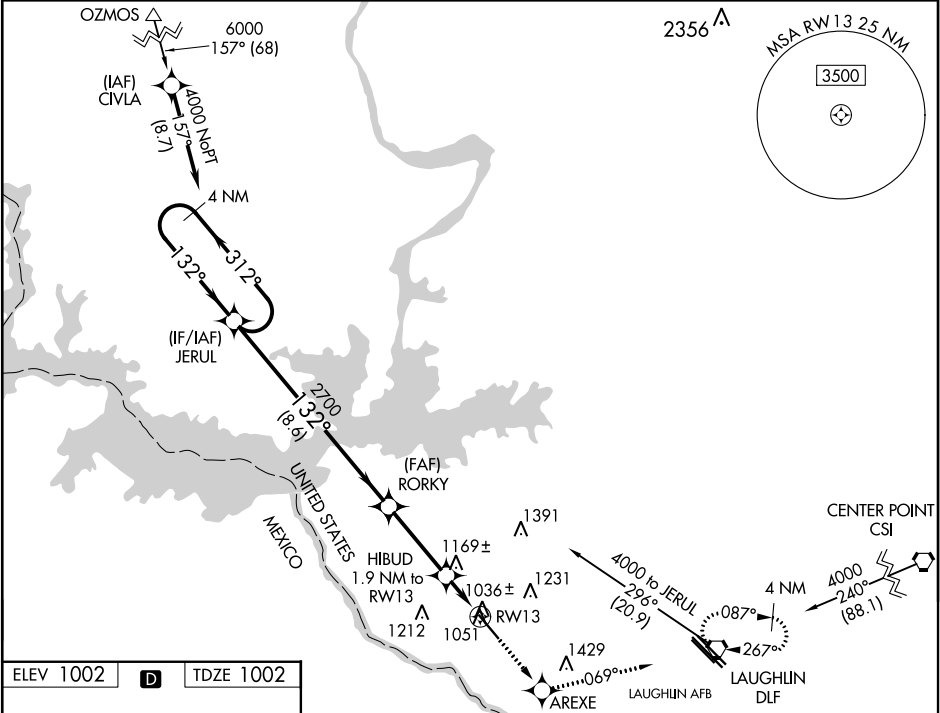


WAAS CH 86499 W13A	APP CRS 132°	Rwy Idg TDZE 1002 Apt Elev 1002
--	------------------------	---

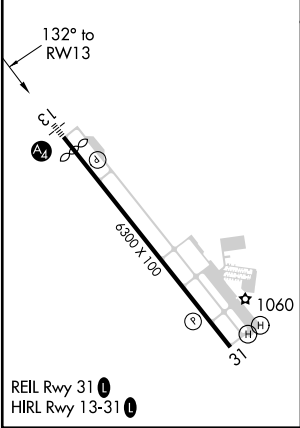
RNAV (GPS) RWY 13
DEL RIO INTL (DRT)

RNP APCH. ⚠ Circling NA for Cat D southwest of Rwy 13-31. When local altimeter setting not received, use Laughlin AFB altimeter setting and increase all DA 30 feet and all MDA 40 feet, increase LPV visibility all Cats, LNAV visibility Cats C and D and Circling visibility Cat D ¼ mile. Baro-VNAV NA when using Laughlin AFB altimeter setting. For uncompensated Baro-VNAV systems, LNAV/VNAV NA below -17° C (2°F) or above 47°C (116°F).	MALS ⚠ =	MISSED APPROACH: Climb to 4000 direct AREXE and on 069° track to DLF VORTAC and hold, continue climb-in-hold to 4000.
--	-------------	---

ASOS 118.525	DEL RIO APP CON * 119.6 259.1	CLNC DEL 120.5	UNICOM 122.8 (CTAF) Ⓜ
------------------------	---	--------------------------	---------------------------------



ELEV 1002	D	TDZE 1002
-----------	---	-----------



VGSI and RNAV glidepath not coincident (VGSI Angle 3.00/TCH 47).				
Holding Pattern		4000	AREXE	tr 069°
GP 3.00° TCH 48		2700	* HIBUD 1.9 NM to RW13	* LNAV only.
JERUL		RORKY	RW13	
8.6 NM		3.2 NM	1.9 NM	
CATEGORY	A	B	C	D
LPV DA	1252-¾		250 (300-¾)	
LNAV/VNAV DA	1401-1		399 (400-1)	
LNAV MDA	1500-½ 498 (500-½)		1500-¾ 498 (500-¾)	1500-1 498 (500-1)
CIRCLING	1500-1 498 (500-1)		1560-1½ 558 (600-1½)	1640-2 638 (700-2)

SC-3, 03 DEC 2020 to 31 DEC 2020

SC-3, 03 DEC 2020 to 31 DEC 2020