

APP CRS	Rwy Idg	7508
298°	TDZE	3011
	Apt Elev	3011

RNAV (GPS) RWY 30

FORT STOCKTON-PECOS COUNTY (FST)

RNP APCH.

T Rwy 30 helicopter visibility reduction below 1 SM NA. When local altimeter setting not received, use Pecos altimeter setting and increase all MDA 160 feet, increase LNAV Cat C/D visibility ½ mile, Circling Cat C visibility ¾ mile, Cat D visibility ½ mile. Circling NA to Rwy 7-25, 11-29 and 16-34. Straight-in Rwy 30 NA at night, Circling Rwy 3, 21, 30 NA at night.

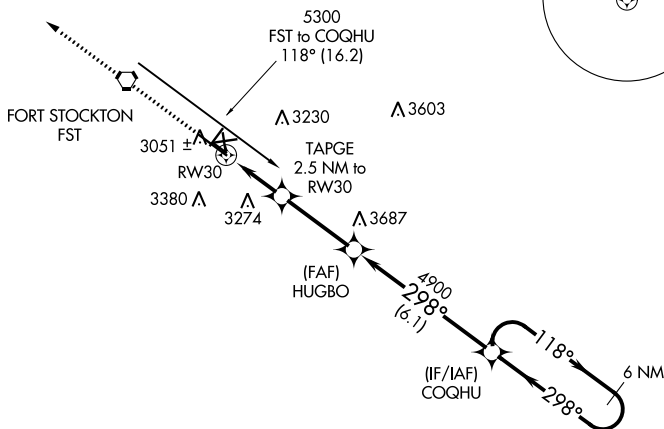
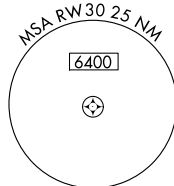
MISSED APPROACH: Climb to 5100 direct ATGIY and hold.

ASOS
118.525

ALBUQUERQUE CENTER
135.875 292.15

UNICOM
122.8 (CTAF) **L**

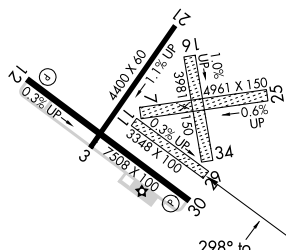
Procedure NA for arrivals at FST
VORTAC via V198-222 westbound.



4061

ELEV 3011

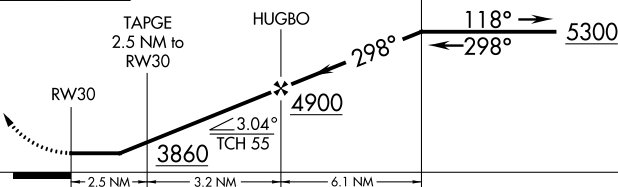
TDZE 3011



5100

ATGIY

VGSI and descent angles not coincident.
(VGSI Angle 3.00/TCH 45).

6 NM
Holding Pattern

CATEGORY	A	B	C	D
LNAV MDA	3500-1 489 (500-1)		3500-1¼ 489 (500-1¼)	3500-1½ 489 (500-1½)
CIRCLING	3540-1 529 (600-1)		3600-1½ 589 (600-1½)	3760-2½ 749 (800-2½)

MIRL Rwy 3-21 and 12-30 **L**

FORT STOCKTON, T
Amdt 1A 06DEC18

FORT STOCKTON-PECOS COUNTY (EST)

30°55'N-102°55'W

RNAV (GPS) RWY 30