

WAAS CH 87130 W35A	APP CRS 353°	Rwy Idg TDZE Apt Elev	5501 580 592
--	------------------------	-----------------------------	---

RNAV (GPS) RWY 35

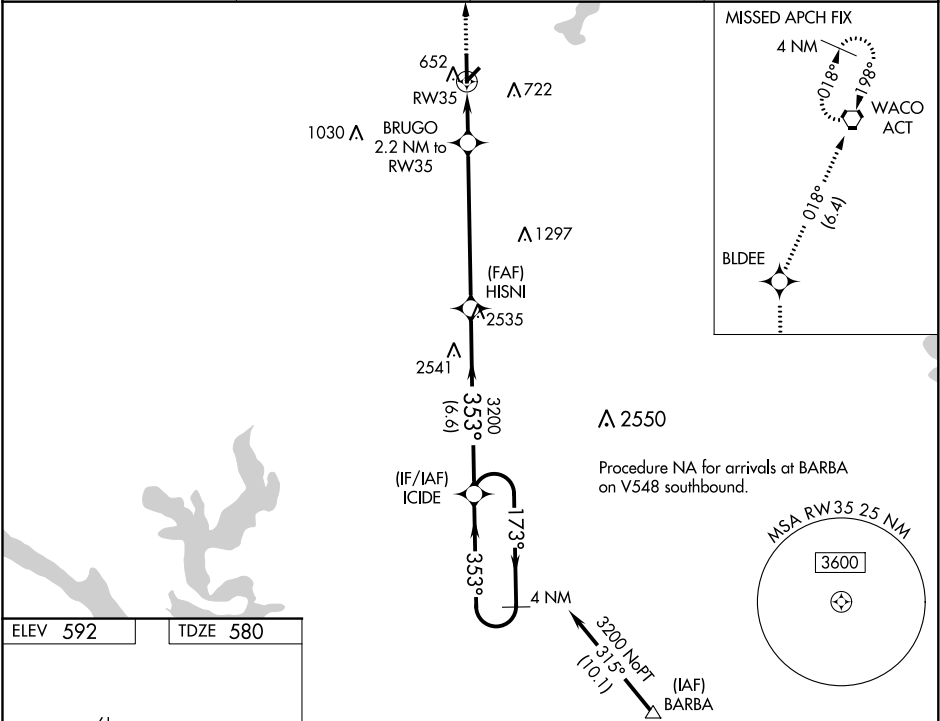
MC GREGOR EXECUTIVE (PWG)

ASR

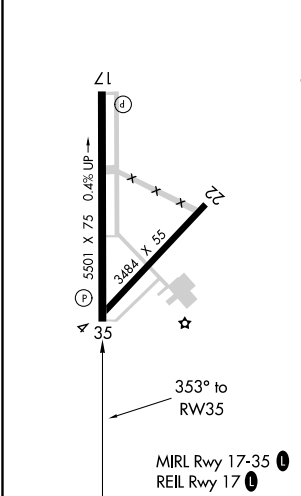
Circling to Rwy 4 NA at night. Baro-VNAV NA when using Waco Rgnl altimeter setting. For uncompensated Baro-VNAV systems, LNAV/VNAV NA below -16°C (4°F) or above 54°C (130°F). When local altimeter setting not received, use Waco Rgnl altimeter setting increase all DA 31 feet and MDA 40 feet. DME/DME RNP-0.3 NA. Helicopter visibility reduction below ¾ SM NA.

MISSED APPROACH:
Climb to 2500 direct BLDEE and on track 018° to ACT VORTAC and hold.

AWOS-3PT 135,525	WACO APP CON ★ 127.65 352.0	GCO 121.725	UNICOM 122.8 (CTAF) 0
----------------------------	---------------------------------------	-----------------------	---------------------------------



ELEV 592	TDZE 580
-----------------	-----------------



2500	BLDEE	ACT	HISNI	ICIDE	4 NM Holding Pattern
↑	018°		3200		
* LNAV only	BRUGO 2.2 NM to RW35		353°	173°	3200
			3200		GP 3.00° TCH 46
	2.2 NM	5.9 NM	6.6 NM		
CATEGORY	A	B	C	D	
LPV DA	830-¾	250 (300-¾)		NA	
LNAV/VNAV DA	830-¾	250 (300-¾)		NA	
LNAV MDA	960-1	380 (400-1)	960-1½ 380 (400-1½)	NA	
CIRCLING	1020-1 428 (500-1)	1060-1 468 (500-1)	1060-1½ 468 (500-1½)	NA	