

WAAS CH 45618 W11A	APP CRS 113°	Rwy Idg 6200 TDZE 2976 Apt Elev 3004
--	------------------------	---

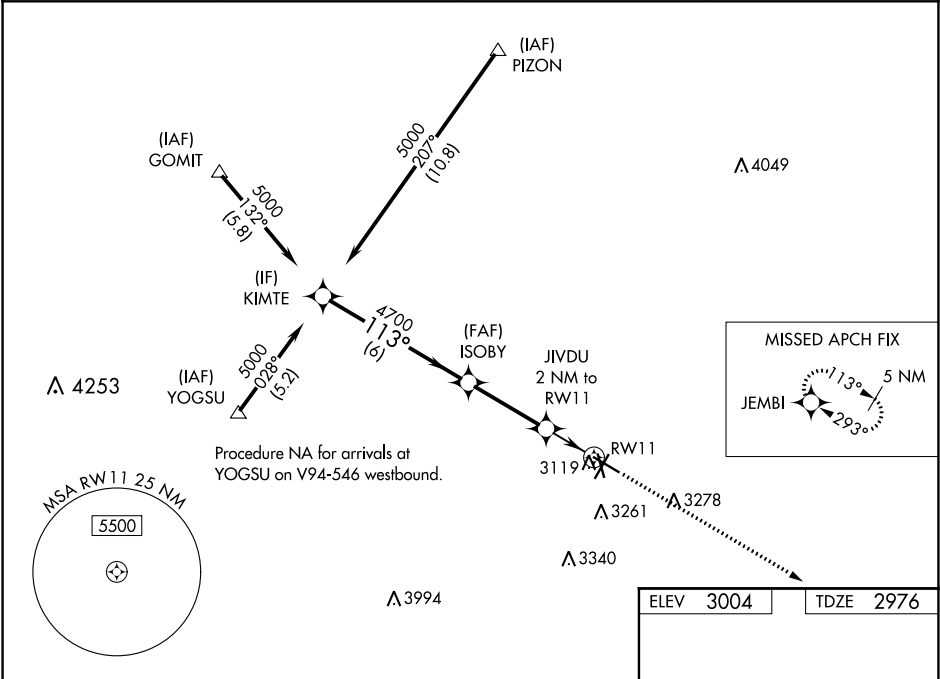
RNAV (GPS) RWY 11
ODESSA-SCHLEMEYER FIELD (ODO)

▼ Circling to Rwy 16 and 20 NA at night. For uncompensated Baro-VNAV systems, LNAV/VNAV NA below -20°C (-4°F) or above 54°C (130°F). DME/DME RNP-0.3 NA. Circling NA S of Rwys 2 and 34.

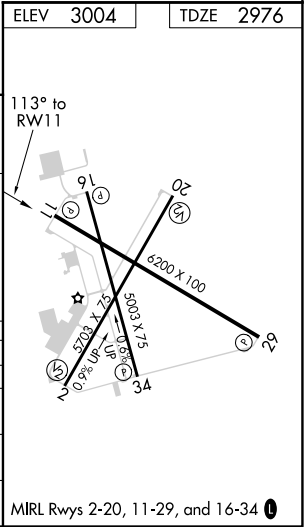
⚠ When local altimeter setting not received use Midland Intl Air and Space Port altimeter setting and increase all DA 41 feet and all MDA 60 feet and increase LNAV/VNAV all Cats visibility 1/8 mile, LNAV Cat C and D and Circling Cat C visibility 1/4 mile. VDP NA with Midland Intl Air and Space Port altimeter setting. Baro-VNAV NA when using Midland Intl Air and Space Port altimeter setting.

MISSED APPROACH:
Climb to 5000 direct JEMBI and hold.

ASOS 119.275	MIDLAND APP CON ★ 124.6 256.875	CLNC DEL 121.7	UNICOM 123.0 (CTAF) 0
------------------------	---	--------------------------	---------------------------------



<p>KIMTE 5000 113° ISOBY 4700 JIVDU 2 NM to RW11 5000 JEMBI</p> <p>GP 3.00° TCH 40</p> <p>*1.2 NM to RW11 RW11</p> <p>*3640</p> <p>6 NM 3.2 NM 0.8 1.2</p> <p>*LNAV only</p>						
CATEGORY	A		B	C	D	
LPV DA	3176-¾		200 (200-¾)			
LNAV/VNAV DA	3347-1¼		371 (400-1¼)			
LNAV MDA	3380-1	404 (400-1)	3380-1⅛		404 (400-1⅛)	
CIRCLING	3460-1	456 (500-1)	3600-1½ 596 (600-1½)		3600-2 596 (600-2)	



SC-3, 03 DEC 2020 to 31 DEC 2020

SC-3, 03 DEC 2020 to 31 DEC 2020