

WAAS
CH **77527**
W30A

APP CRS
305°

Rwy Idg **5300**
TDZE **1589**
Apt Elev **1617**

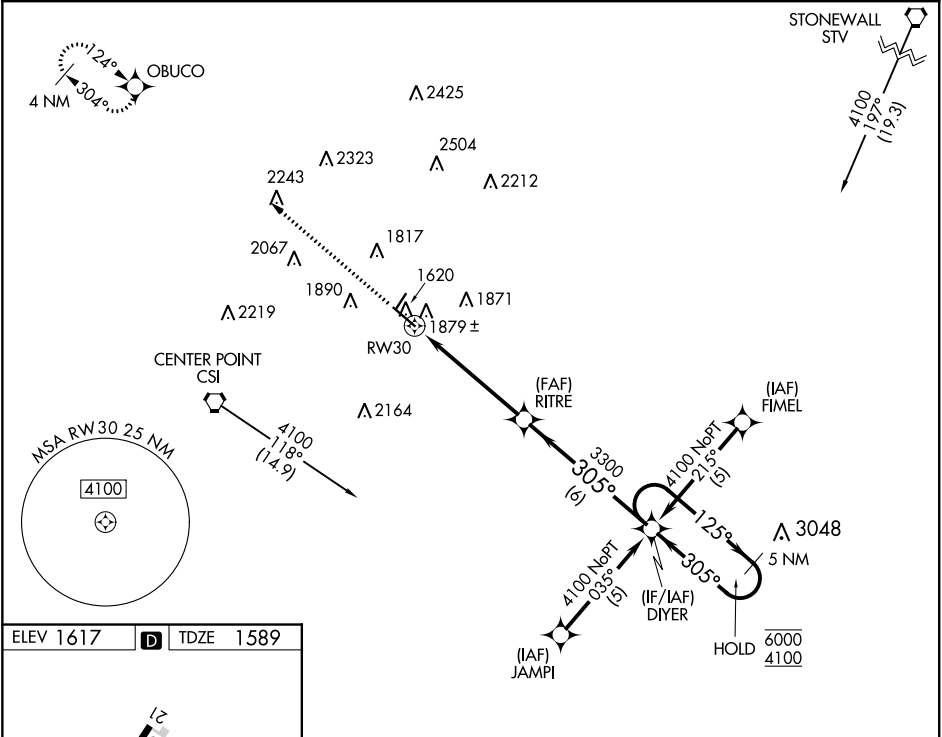
RNAV (GPS) RWY 30

KERRVILLE MUNI/LOUIS SCHREINER FIELD (E.R.V)

RNP APCH.

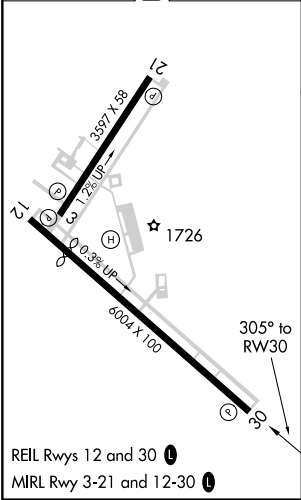
MISSED APPROACH: Climb to 4000
direct OBUOCO and hold.

AWOS-3 118.125	HOUSTON CENTER 125.625 269.4	CLNC DEL 134.95	UNICOM 122.7 (CTAF)
--------------------------	--	---------------------------	-------------------------------



ELEV 1617

TDZE 1589



4000	OBUOCO	VGSI and RNAV glidepath not coincident (VGSI Angle 3.00°/TCH 40).				5 NM Holding Pattern
*RNAV only.		*1.7 NM to RWY30		DIYER		125° → 6000 ← 305° 4100
RWY30		3300		3300		GP 3.00° TCH 45
1.7 NM		3.5 NM		6 NM		
CATEGORY	A	B	C	D		
LPV DA	1860-1 271 (300-1)				NA	
RNAV MDA	2140-1 551 (600-1)		2140-1 551 (600-1 5/8)		NA	
CIRCLING	2320-1 703 (800-1)		2340-1 723 (800-1)		2380-2 763 (800-2 1/4)	