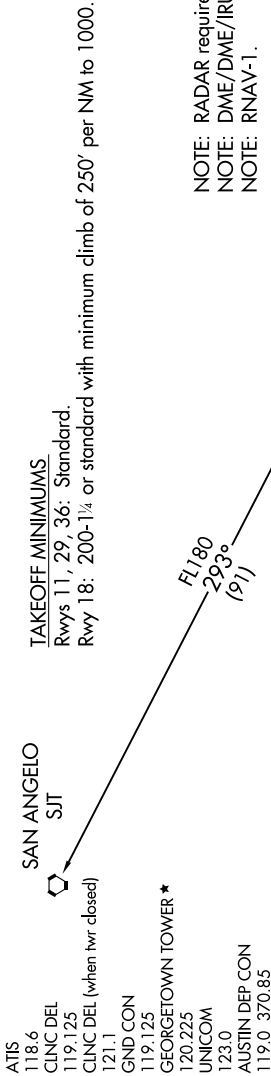
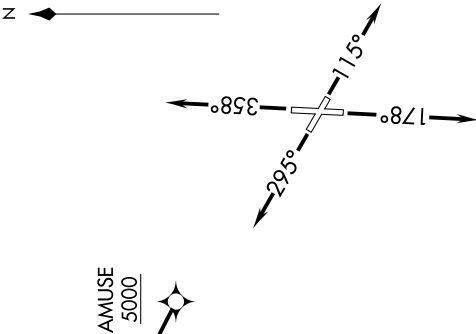


SC-3, 03 DEC 2020 to 31 DEC 2020

TOP ALTITUDE:
ASSIGNED BY ATC



NOTE: RADAR required.
NOTE: DME/DME/IRU or GPS required.
NOTE: RNAV-1.



DEPARTURE ROUTE DESCRIPTION

TAKEOFF RUNWAY 11: Climb heading 115° or as assigned by ATC for RADAR vectors to cross AMUSE at or above 5000. Thence....
TAKEOFF RUNWAY 18: Climb heading 178° or as assigned by ATC for RADAR vectors to cross AMUSE at or above 5000. Thence....
TAKEOFF RUNWAY 29: Climb heading 295° or as assigned by ATC for RADAR vectors to cross AMUSE at or above 5000. Thence....
TAKEOFF RUNWAY 36: Climb heading 358° or as assigned by ATC for RADAR vectors to cross AMUSE at or above 5000. Thence....
... on track 293° to AEROZ, then on SAN ANGELO TRANSITION. Maintain altitude assigned by ATC. Expect filed altitude 10 minutes after departure.

SAN ANGELO TRANSITION (AEROZ1.SJT):

NOTE: Chart not to scale.

SC-3, 03 DEC 2020 to 31 DEC 2020