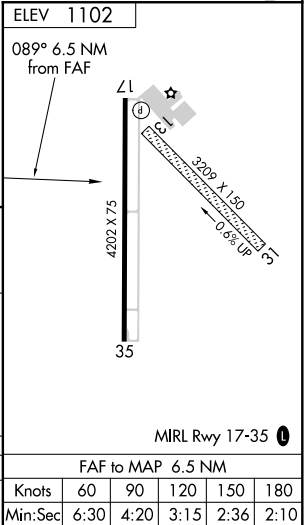
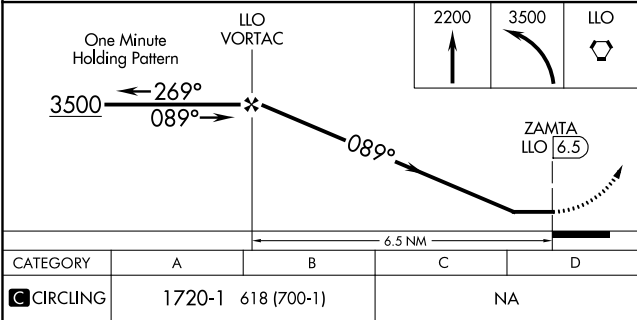
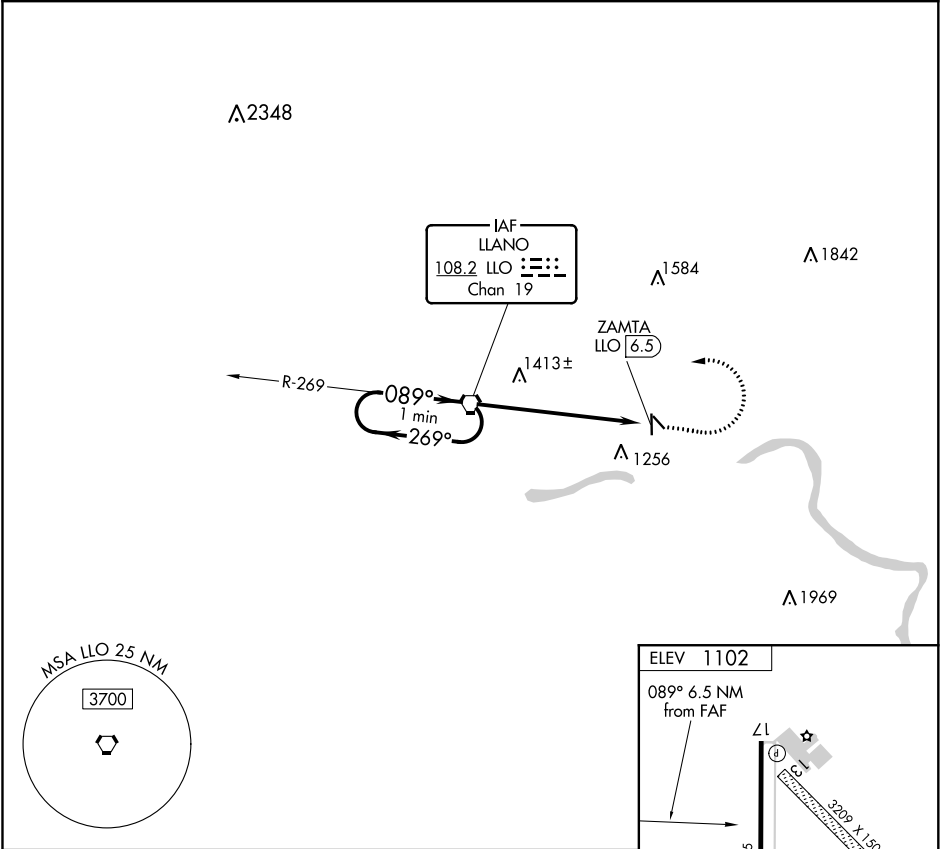


VORTAC LLO	APP CRS	Rwy Idg	N/A
<b>108.2</b>	<b>089°</b>	TDZE	N/A
Chan 19		Apt Elev	<b>1102</b>

VOR-A  
LLANO MUNI (AQO)

<b>⚠</b> Circling Rwy 13, 31 NA. Circling Rwy 35 NA at night. When local altimeter setting not received, use Burnet altimeter setting and increase all MDA 80 feet.	MISSED APPROACH: Climb to 2200 then climbing left turn to 3500 direct LLO VORTAC.
---	---

AWOS-3 <b>119.425</b>	HOUSTON CENTER <b>132.35 317.5</b>	UNICOM <b>123.05 (CTAF)</b> <b>①</b>
--------------------------	---------------------------------------	---



LLANO, TEXAS	Amtd 4A 19JUL18	30°47'N-98°40'W	LLANO MUNI (AQO)	VOR-A
--------------	-----------------	-----------------	------------------	-------

SC-3, 03 DEC 2020 to 31 DEC 2020

SC-3, 03 DEC 2020 to 31 DEC 2020