

WAAS CH <b>82435</b> <b>W13A</b>	APP CRS <b>128°</b>	Rwy Idg <b>6503</b> TDZE <b>658</b> Apt Elev <b>658</b>
--	------------------------	---

## RNAV (GPS) RWY 13

NEW BRAUNFELS RG NL (BAZ)

RNP APCH

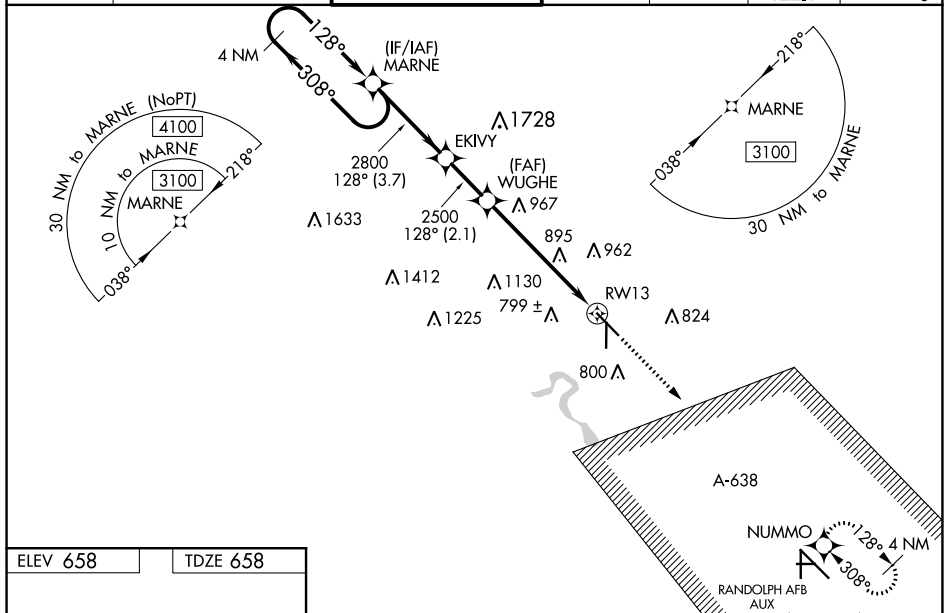
**⚠** When local altimeter setting not received, use San Marcos Rgnl altimeter setting; increase LPV DA to 951 feet, LNAV/VNAV DA to 1169 feet; increase all MDAs 60 feet and visibility LNAV and Circling Cat C/D ¼ SM. For uncompensated Baro-VNAV systems, LNAV/VNAV NA below -6°C (22°F) or above 54°C (130°F). Baro-VNAV and VDP NA when using San Marcos altimeter setting. For inop ALS, increase LNAV/VNAV visibility to 1% SM. Inop table does not apply to LPV all Cats and LNAV Cats A/B. For inop ALS when using San Marcos Rgnl altimeter setting, increase LPV all Cats visibility to % SM and LNAV/VNAV all Cats visibility to 1% SM. When using San Marcos Rgnl altimeter setting, inop table does not apply to LNAV Cats A/B.

MALS

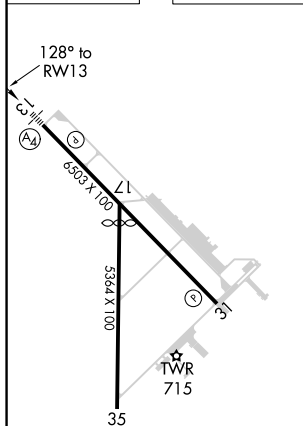


**MISSED APPROACH:**  
Climb to 3500 direct  
NUMMO and hold,  
continue climb-in-hold  
to 3500.

ATIS 119.325	SAN ANTONIO APP CON 124.45 335.625	NEW BRAUNFELS TOWER ★ 127.05 285.4	GND CON 120.175	CLNC DEL 134.75	UNICOM 122.7	CTAF 127.05
-----------------	---------------------------------------	---------------------------------------	--------------------	--------------------	-----------------	----------------



ELEV 658		TDZE 658
----------	--	----------

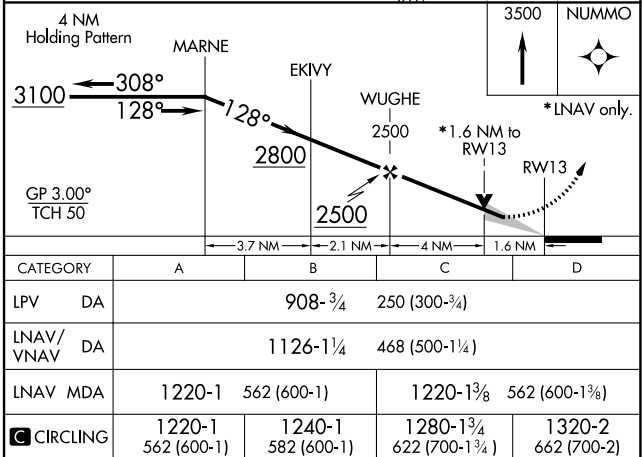


REIL Rwy 13

MIRL Rwy 13-31 and 17-35 L

Amdt 1A 08NOV18

29°42'N-98°02'W



NEW BRAUNFELS RGNI (BAZ)

RNAV (GPS) RWY 13