

WAAS CH 53640 W17A	APP CRS 174°	Rwy Idg TDZE 111 Apt Elev 112
---------------------------------	------------------------	---

RNAV (GPS) RWY 17

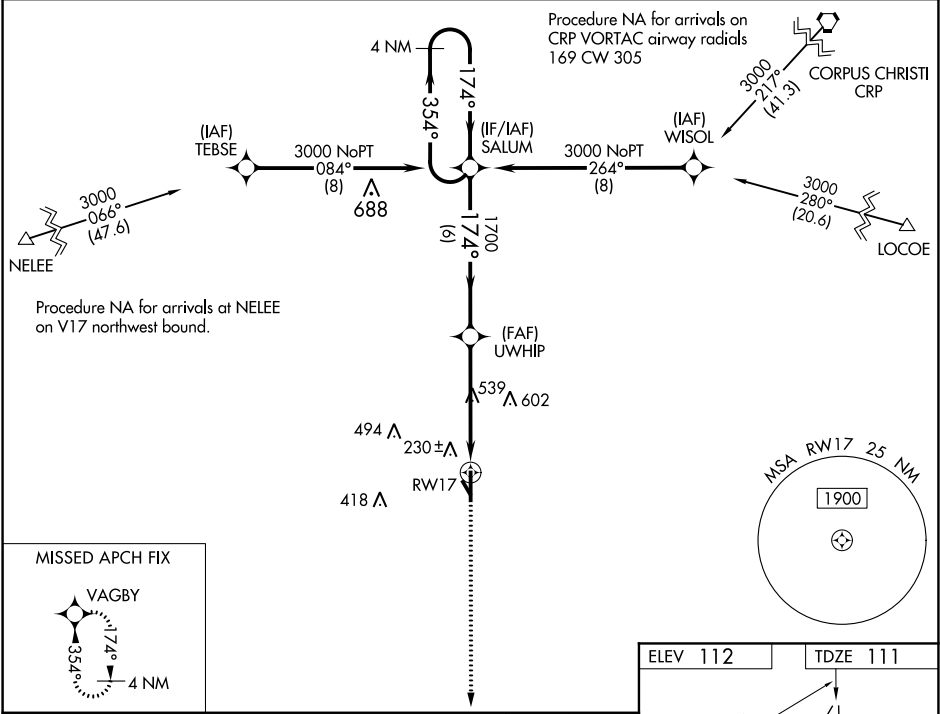
BROOKS COUNTY (BKS)

⚠

For uncompensated Baro-VNAV systems, LNAV/VNAV NA below -15°C (5°F) or above 54°C (130°F).
Circling Rwy 14 NA at night. Rwy 17 helicopter visibility reduction below ¾ SM NA.
DME/DME RNP-0.3 NA. Circling NA for Cat D west of Rwy 17-35.

MISSED APPROACH: Climb to 3000 direct VAGBY and hold.

AWOS-3 118.125	KINGSVILLE APP CON ★ 119.9 290.45	UNICOM 122.8 (CTAF) 0
--------------------------	---	---------------------------------



4 NM Holding Pattern

SALUM

UWHIP

RW17

3000

174°

354°

1700

6 NM

2.7 NM

2.1 NM

*LNAV only.

VAGBY

3000

GP 3.00°

TCH 45

CATEGORY	A	B	C	D
LPV DA	361-1 250 (300-1)			
LNAV/VNAV DA	361-1 250 (300-1)			
LNAV MDA	840-1 729 (800-1)		840-2 729 (800-2)	
CIRCLING	840-1 728 (800-1)		940-2½ 828 (900-2½)	940-2¾ 828 (900-2¾)

ELEV 112

TDZE 111

174° to RW17

32

35

6006 X 75

3018 X 80

154

MIRL Rwy 17-35 0

REIL Rwy 17 0

SC-3, 03 DEC 2020 to 31 DEC 2020

SC-3, 03 DEC 2020 to 31 DEC 2020