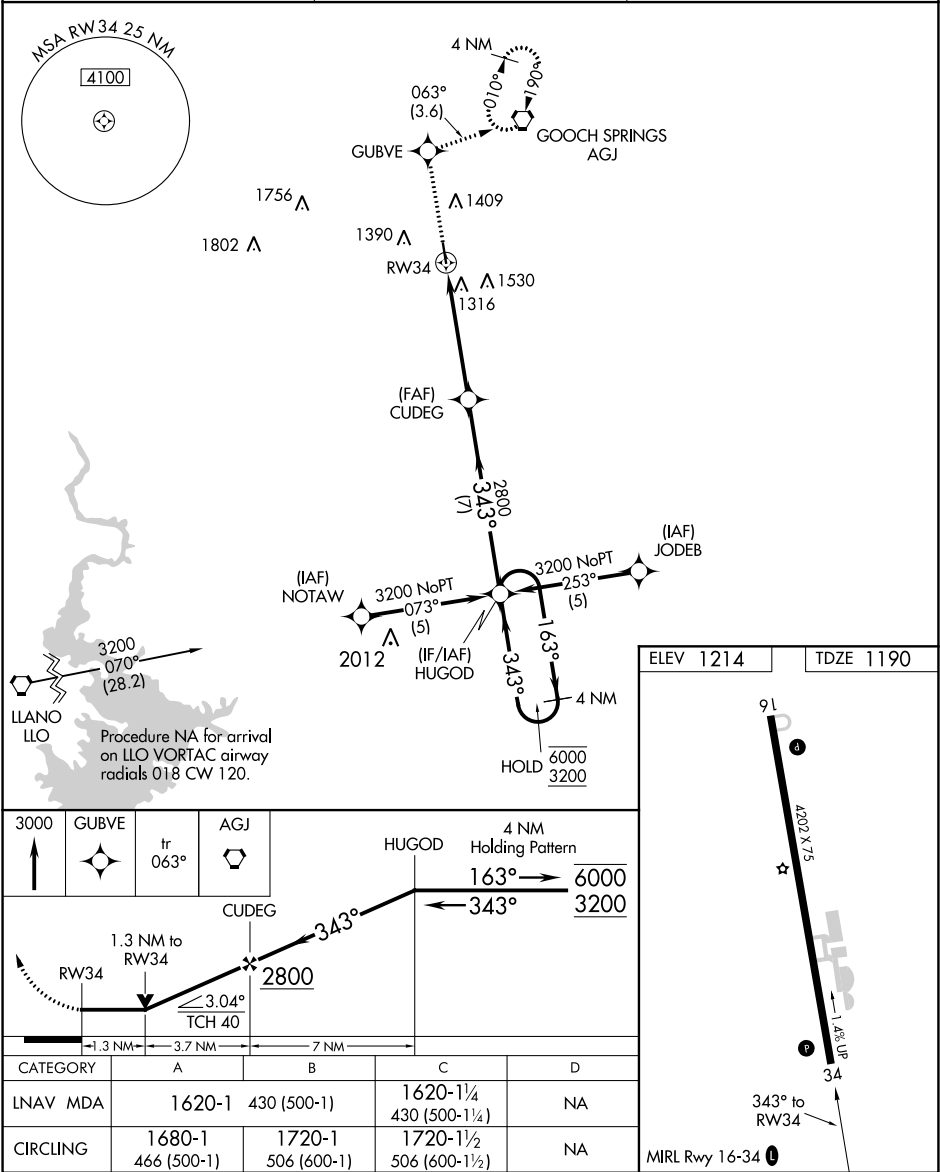


APP CRS	Rwy Idg	4202
343°	TDZE	1190
	Apt Elev	1214

RNAV (GPS) RWY 34
LAMPASAS (LZZ)

RNP APCH.	MISSED APPROACH: Climb to 3000 direct GUBVE and on track 063° to AGJ VORTAC and hold.
◀ Circling Rwy 16 NA at night. Rwy 34 helicopter visibility reduction below ¾ SM NA.	

AWOS-3 119.075	GRAY APP CON 120.075 323.15	UNICOM 122.8 (CTAF) 0
-------------------	--------------------------------	--------------------------



SC-3, 03 DEC 2020 to 31 DEC 2020

SC-3, 03 DEC 2020 to 31 DEC 2020