

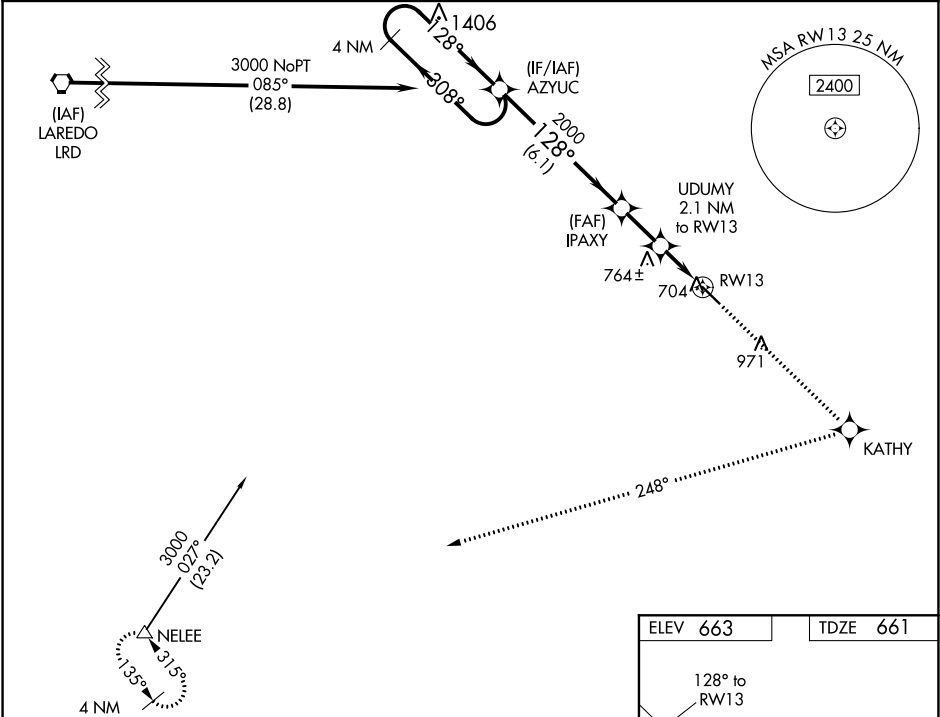
WAAS CH <b>45918</b> <b>W13A</b>	APP CRS <b>128°</b>	Rwy Idg TDZE <b>661</b> Apt Elev <b>663</b>
--	------------------------	---

**RNAV (GPS) RWY 13**  
JIM HOGG COUNTY (HBV)

**⚠** Baro-VNAV NA when using Laredo altimeter setting. For uncompensated Baro-VNAV systems, LNAV/VNAV NA below -16°C (4°F) or above 54°C (130°F). DME/DME RNP-0.3 NA. Visibility reduction by helicopters NA. When local altimeter setting not received, use Laredo altimeter setting and increase all DA 115 feet and all MDA 120 feet; increase LPV all Cats, and LNAV Cat C visibility ¼ mile and LNAV/VNAV all Cats visibility ½ mile. VDP NA with Laredo altimeter setting.

**MISSED APPROACH:** Climb to 3000 direct KATHY and right turn on track 248° to NELEE and hold

AWOS-3 <b>118.075</b>	HOUSTON CENTER <b>127.8 307.2</b>	UNICOM <b>122.8 (CTAF) 0</b>
--------------------------	--------------------------------------	---------------------------------



**4 NM Holding Pattern**

AZYUC

GP 3.00° TCH 39°

3000

308°

128°

128°

2000

1360

6.1 NM

1.9 NM

1.1 NM

1 NM

**3000**

**KATHY**

**UDUMY**  
2.1 NM to RW13

**\*LNAV only**

**\*1 NM to RW13**

**RW13**

**NELEE**

**tr 248°**

CATEGORY	A	B	C	D
LPV DA	911-1	250 (300-1)		NA
LNAV/VNAV DA	974-1	313 (400-1)		NA
LNAV MDA	1020-1	359 (400-1)		NA
CIRCLING	1020-1 357 (400-1)	1120-1 457 (500-1)	1120-1½ 457 (500-1½)	NA

**ELEV 663**

**TDZE 661**

**128° to RW13**

**5003 X75**

**MIRL Rwy 13-31 0**