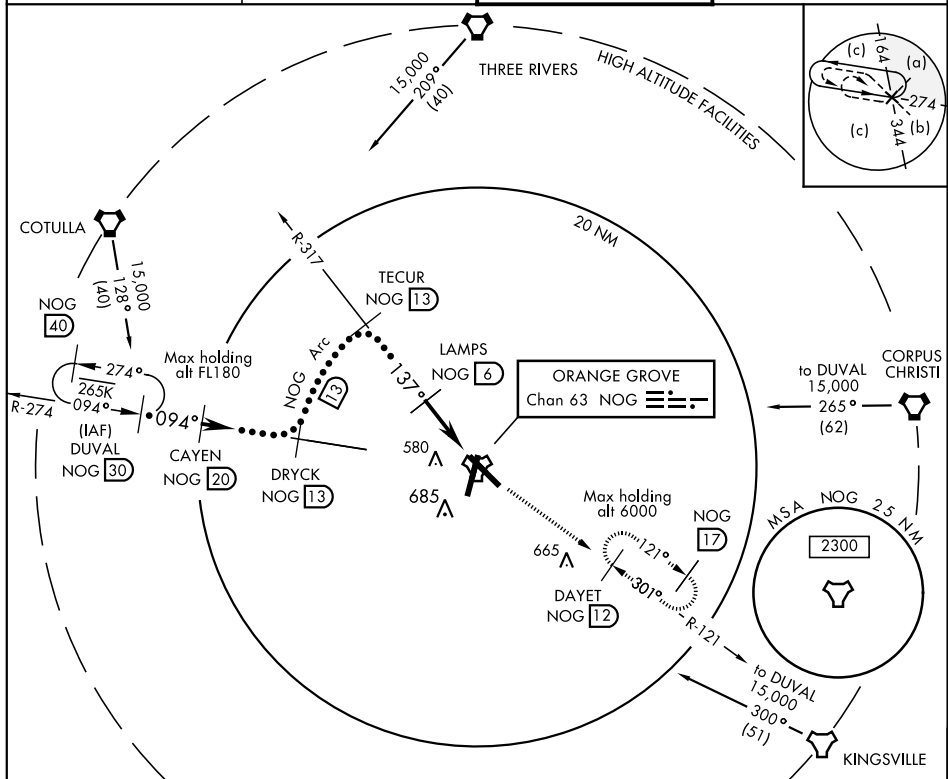


TACAN Chan <b>63</b>	NOG	APCH CRS <b>137°</b>	Rwy Idg THRE Arpt Elev <b>8001</b> <b>257</b> <b>257</b>	JAL-6553 [USN]	ORANGE GROVE NALF (KNOG)
-------------------------	-----	-------------------------	--	----------------	--------------------------

MISSED APPROACH: Climb to 3000 via NOG TACAN R-317 to NOG and NOG R-121 to DAYET and hold.

ATIS ★ <b>254.35</b>	KINGSVILLE APP CON <b>119.90 290.45</b>	ORANGE GROVE TOWER ★ <b>281.425 318.85</b>	GND CON <b>229.4</b>
-------------------------	--	---	-------------------------



EMERG SAFE ALT 100 NM 16,200

DUVAL 30	CAYEN 20	DRYCK R-274 13	TECUR R-317 13	LAMPS 6	SPARS 1.6	TACAN
* 15,000	* Or as assigned	8000	3000	2000	4.8 NM	0.5
094°	137°	Arc				
3.04°	TCH 50					
CATEGORY	C	D	E			
S-13	580-1	323 (400-1)				
CIRCLING	920-1¼ 663 (700-1¼)	1000-2½ 743 (800-2½)	1000-2¾ 743 (800-2¾)			

