

WAAS CH <b>53608</b> <b>W17A</b>	APP CRS <b>173°</b>	Rwy Idg <b>4605</b> TDZE <b>1827</b> Apt Elev <b>1827</b>
--	------------------------	---

RNAV (GPS) RWY 17

CURTIS FIELD (BBD)

RNP APCH.

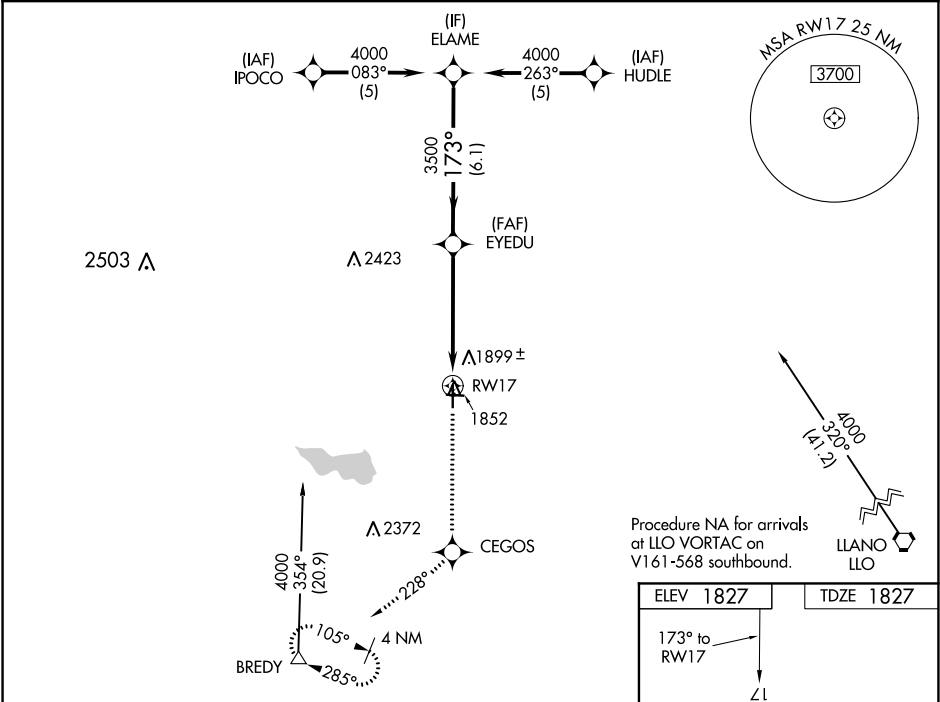
▼

▲

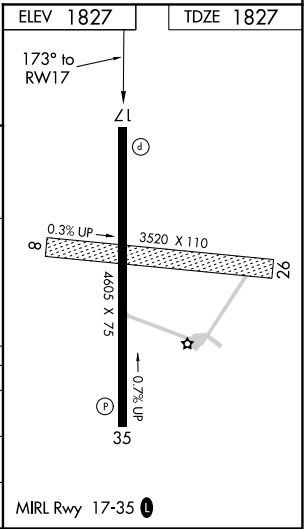
For uncompensated Baro-VNAV systems, LNAV/VNAV NA below -18°C (0°F) or above 54°C (130°F). When local altimeter setting not received, use Junction altimeter setting and increase all DA/MDA 120 feet, increase LPV all Cats visibility ¼ mile, LNAV/VNAV all Cats visibility ½ mile, and LNAV Cat C visibility ½ mile. VDP and Baro-VNAV NA when using Junction altimeter setting.

MISSED APPROACH: Climb to 4000 direct CEGOS and on track 228° to BREDY and hold.

AWOS-3 <b>118.375</b>	HOUSTON CENTER <b>132.35 317.5</b>	UNICOM <b>122.8 (CTAF) 0</b>
--------------------------	---------------------------------------	---------------------------------



Procedure Turn NA		ELAME	4000	CEGOS	fr 228°	BREDY
GP 3.00° TCH 40		4000	173°	3500	*1.7 NM to RW17	*LNAV only.
		6.1 NM	3.4 NM	1.7 NM		
CATEGORY		A	B	C	D	
LPV DA		2077-1	250 (300-1)		NA	
LNAV/VNAV DA		2191-1¼	364 (400-1¼)		NA	
LNAV MDA		2420-1	593 (600-1)	2420-1½ 593 (600-1½)	NA	



SC-3, 03 DEC 2020 to 31 DEC 2020

SC-3, 03 DEC 2020 to 31 DEC 2020