

WAAS CH <b>50340</b> <b>W31A</b>	APP CRS <b>309°</b>	Rwy Idg <b>3700</b> TDZE <b>79</b> Apt Elev <b>80</b>
--	------------------------	---

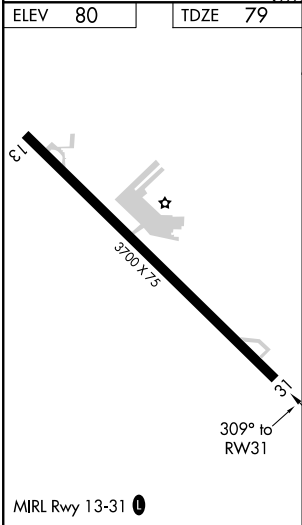
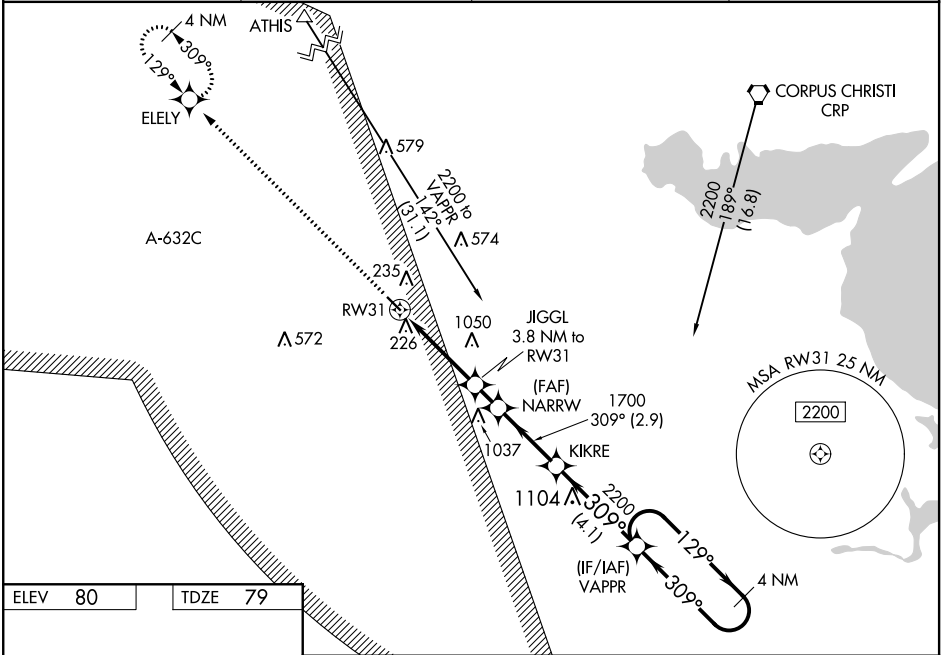
RNAV (GPS) RWY 31

NUECES COUNTY (RBO)

**⚠** For uncompensated Baro-VNAV systems, LNAV/VNAV NA below -15°C (5°F) or above 54°C (130°F). Circling NA northeast of Rwy 13-31. Baro-VNAV and VDP NA when using Corpus Christi Intl altimeter setting. Rwy 31 helicopter visibility reduction below 3/4 SM NA. DME/DME RNP-0.3 NA. Procedure NA at night. When local altimeter not received, use Corpus Christi Intl altimeter setting and increase LPV DA to 357 feet, LNAV/VNAV DA to 398 feet and all MDA 40 feet, increase LNAV/VNAV all Cats visibility 1/8 SM.

MISSED APPROACH: Climb to 2000 direct ELEY and hold.

AWOS-3 <b>118.175</b>	KINGSVILLE APP CON ★ <b>119.9 290.45</b>	CTAF <b>122.9</b>	<b>122.8</b> <b>0</b>
--------------------------	---	----------------------	-----------------------



	2000	ELEY							
				NARRW	KIKRE	VAPPR	4 NM	Holding Pattern	
				JIGGL 3.8 NM to RW31	1700	309°	129°	2200	
				*1.1 NM to RW31	1320*	1700			GP 3.00° TCH 40
				1.1 NM	2.7 NM	1.2 NM	2.9 NM	4.1 NM	
CATEGORY	A		B	C	D				
LPV DA	329-1	250 (300-1)			NA				
LNAV/VNAV DA	370-1	291 (300-1)			NA				
LNAV MDA	480-1	401 (400-1)			NA				
CIRCLING	540-1	460 (500-1)			NA				