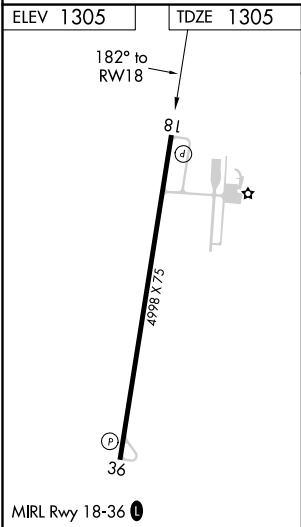
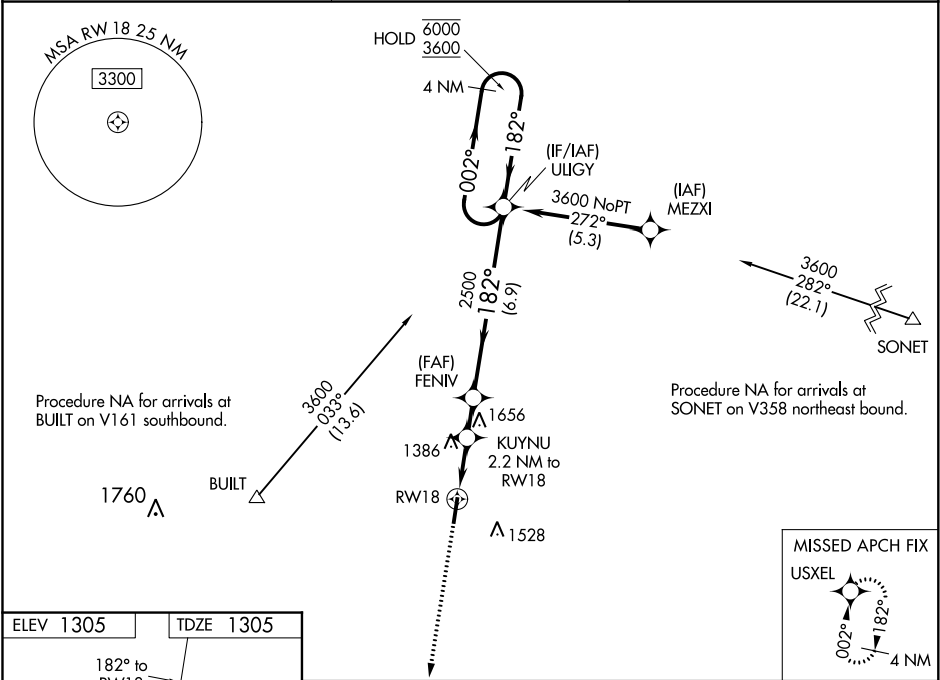


WAAS CH <b>72629</b> <b>W18A</b>	APP CRS <b>182°</b>	Rwy Idg TDZE <b>1305</b> Apt Elev <b>1305</b>
--	------------------------	---

RNAV (GPS) RWY 18  
HAMILTON MUNI (MNZ)

RNP APCH. ▼ Rwy 18 helicopter visibility reduction below ¾ SM NA. For uncompensated Baro-VNAV systems, LNAV/VNAV NA below -17°C or above 54°C.	MISSED APPROACH: Climb to 3100 direct USXEL and hold.
--	---

AWOS-3 <b>118.525</b>	GRAY APP CON <b>120.075 323.15</b>	UNICOM <b>122.7 (CTAF) 0</b>
--------------------------	---------------------------------------	---------------------------------



ELEV 1305 TDZE 1305		3100 USXEL		UUGY 4 NM Holding Pattern	
*LNAV only.		KUYNU 2.2 NM to RW18		FENIV 2500	
*0.9 NM to RW18		*2040		2500	
0.9		1.3 NM		1.4 NM	
6.9 NM		GP 3.00° TCH 40			
CATEGORY	A	B	C	D	
LPV DA	1555-1	250 (300-1)		NA	
LNAV/VNAV DA	1555-1	250 (300-1)		NA	
LNAV MDA	1640-1	335 (400-1)		NA	
CIRCLING	1680-1 375 (400-1)	1760-1 455 (500-1)	1900-1½ 595 (600-1½)	NA	