

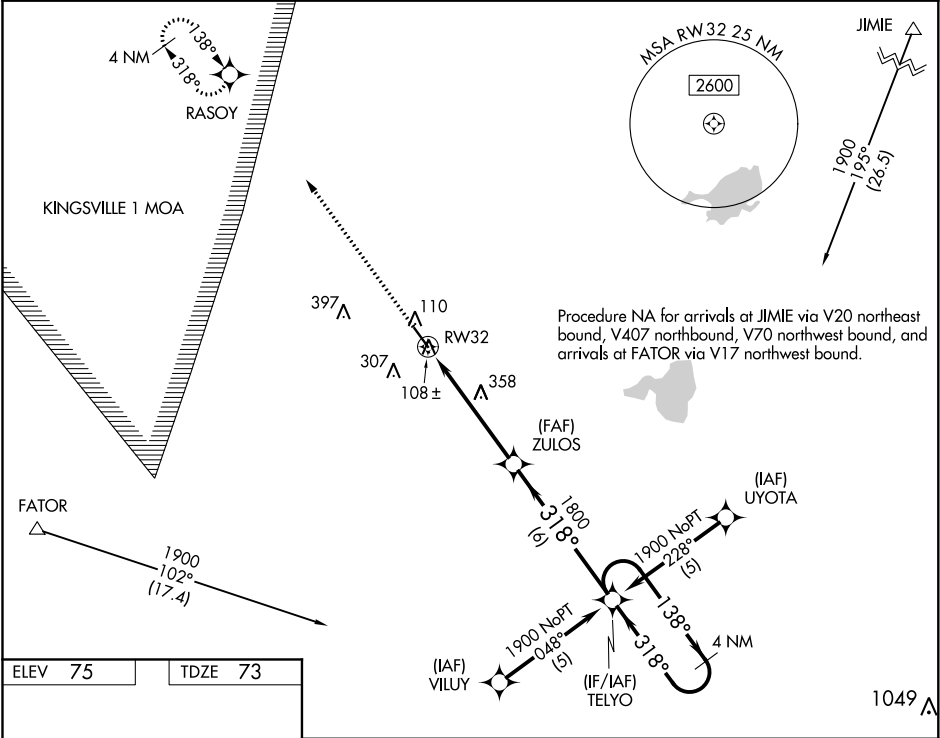
WAAS CH 70701 W32A	APP CRS 318°	Rwy Idg TDZE 73 Apt Elev 75
--	------------------------	---

RNAV (GPS) RWY 32

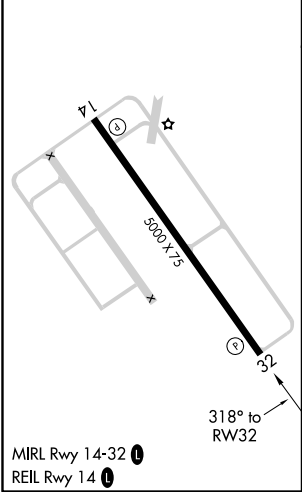
SOUTH TEXAS INTL AT EDINBURG (EBG)

Visibility reduction by helicopters NA. DME/DME RNP-0.3 NA. For uncompensated Baro-VNAV systems, LNAV/VNAV NA below -15°C (5°F) or above 48°C (120°F).	MISSED APPROACH: Climb to 1900 direct RASOY and hold.
--	---

AWOS-3 118.025	CORPUS APP CON 121.0 377.2	UNICOM 122.8 (CTAF) 0
--------------------------	--------------------------------------	---------------------------------



ELEV 75	TDZE 73
----------------	----------------



1900 ↑	RASOY ✦	VGSI and RNAV glidepath not coincident.		4 NM Holding Pattern	
*LNAV only.		*1.8 NM to RW32	ZULOS	TELYO	1900
RW32		1.8	3.4 NM	6 NM	138° → ← 318°
					GP 3.00° TCH 45
CATEGORY		A	B	C	D
LPV DA		323-¾ 250 (300-¾)			
LNAV/ VNAV DA		361-1 288 (300-1)			
LNAV MDA		660-1	587 (600-1)	660-1½ 587 (600-½)	660-1¾ 587 (600-¾)
CIRCLING		660-1	585 (600-1)	660-1½ 585 (600-½)	660-2 585 (600-2)

SC-3, 03 DEC 2020 to 31 DEC 2020

SC-3, 03 DEC 2020 to 31 DEC 2020