

WAAS  
Ch **78301**  
**W13A**

APP CRS  
**133°**

Rwy Idg **5000**  
TDZE **18**  
Apt Elev **18**

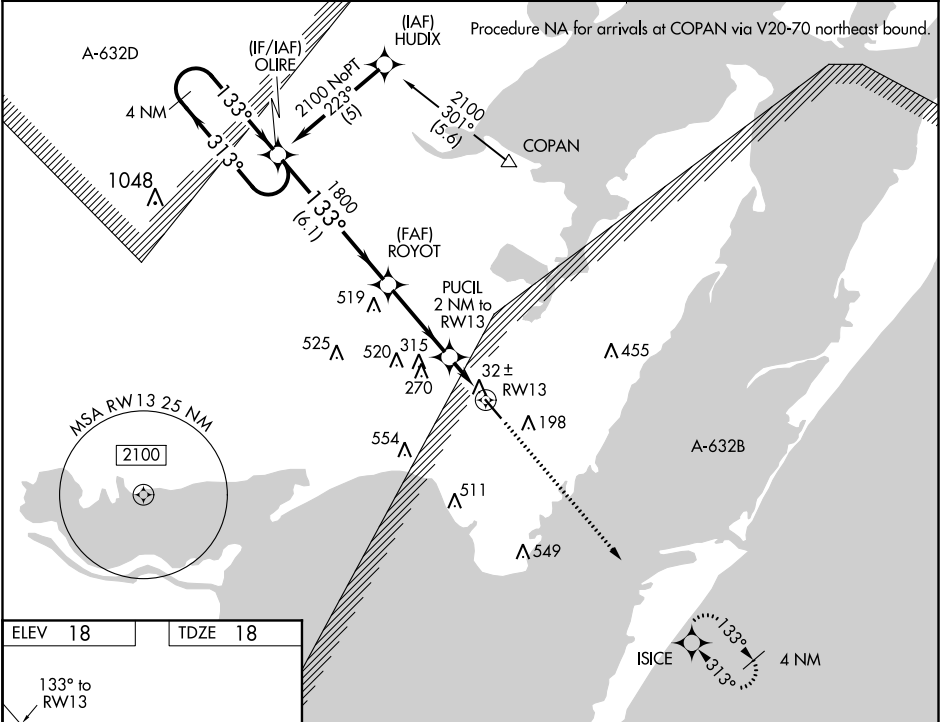
**RNAV (GPS) RWY 13**  
MCCAMPBELL-PORTER (TFP)

**⚠** Baro-VNAV NA when using Mustang Beach altimeter setting. DME/DME RNP-0.3 NA. For uncompensated Baro-VNAV systems, LNAV/VNAV NA below -15°C (5°F) or above 49°C (120°F). When local altimeter setting not received, use Mustang Beach altimeter setting and increase LPV DA to 291 feet; LNAV/VNAV DA to 309 feet; and all MDAs 40 feet. VDP NA when using Mustang Beach altimeter setting.

**W**

**MISSED APPROACH:**  
Climb to 2000 direct ISICE and hold.

AWOS-3 <b>118.775</b>	CORPUS APP CON <b>120.9 348.725</b>	UNICOM <b>122.7 (CTAF) 0</b>
--------------------------	--	---------------------------------



ELEV <b>18</b>	TDZE <b>18</b>	<div><div>4 NM Holding Pattern</div><div>OLIRE</div><div>ROYOT</div><div>PUCIL 2 NM to RW13</div><div>2000 ISICE</div><div>GP 3.00° TCH 40</div><div>* LNAV only</div><div>* 0.8 NM to RW13</div><div>* 680</div></div>			
		6.1 NM	3.4 NM	1.2	0.8
CATEGORY	A	B	C	D	
LPV DA		268-1	250 (300-1)		
LNAV/VNAV DA		286-1	268 (300-1)		
LNAV MDA		300-1	282 (300-1)		
CIRCLING	520-1	502 (600-1)	520-1½ 502 (600-1½)	580-2	562 (600-2)