

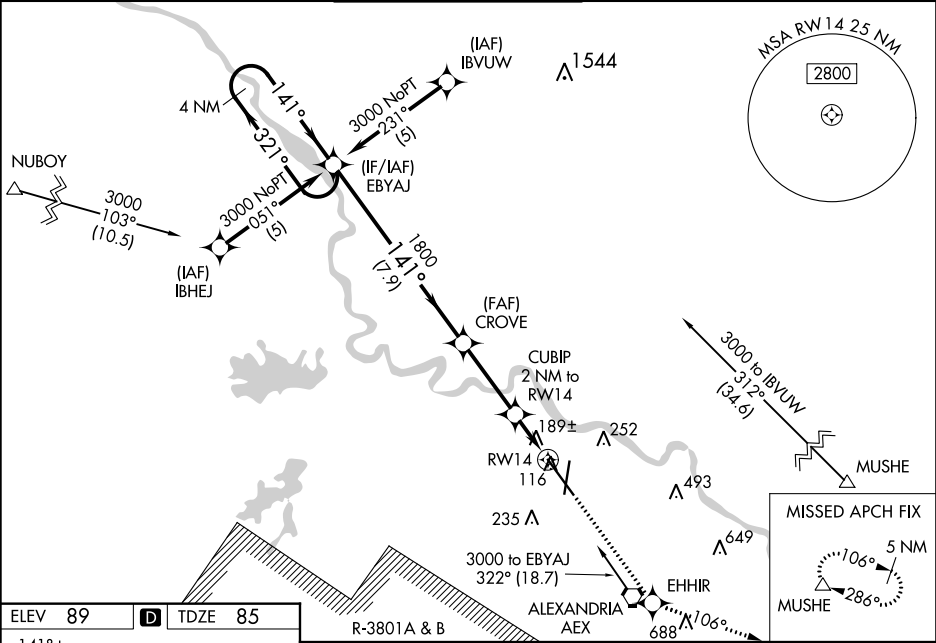
▼

DME/DME RNP-0.3 NA. For uncompensated Baro-VNAV systems, LNAV/VNAV NA below -15°C (5°F) or above 48°C (118°F). For inop SSALR increase LNAV Cat D visibility to RVR 6000. RADAR required when R-3801 A-B in use. **RVR 1800 authorized with use of FD or AP or HUD to DA.

SSALR

MISSED APPROACH: Climb to 4000 direct EHHIR and via track 106° to MUSHE and hold.

ASOS 123.975	POLK APP CON 125.4 254.8	ALEXANDRIA TOWER 127.35 (CTAF) 269.2	GND CON 121.9 372.0	CLNC DEL 121.9
------------------------	------------------------------------	--	-------------------------------	--------------------------



ELEV 89	D	TDZE 85
R-3801A & B		
VGSI and RNAV glidepath not coincident (VGSI Angle 3.00/TCH 70).		
Holding Pattern EBYAJ		
3000 ← 321° → 141° → 141° → 1800 → 780 → RWY 14		
GP 3.00° TCH 56		
7.9 NM 3.1 NM 1 NM 1 NM		
CATEGORY	A	B
LPV DA**	285/24	200 (200-½)
LNAV/VNAV DA	488/50	403 (400-1)
LNAV MDA	480/24	395 (400-½)
CIRCLING	540-1 451 (500-1)	560-1 471 (500-1)
	560-1½ 471 (500-1½)	640-2 551 (600-2)