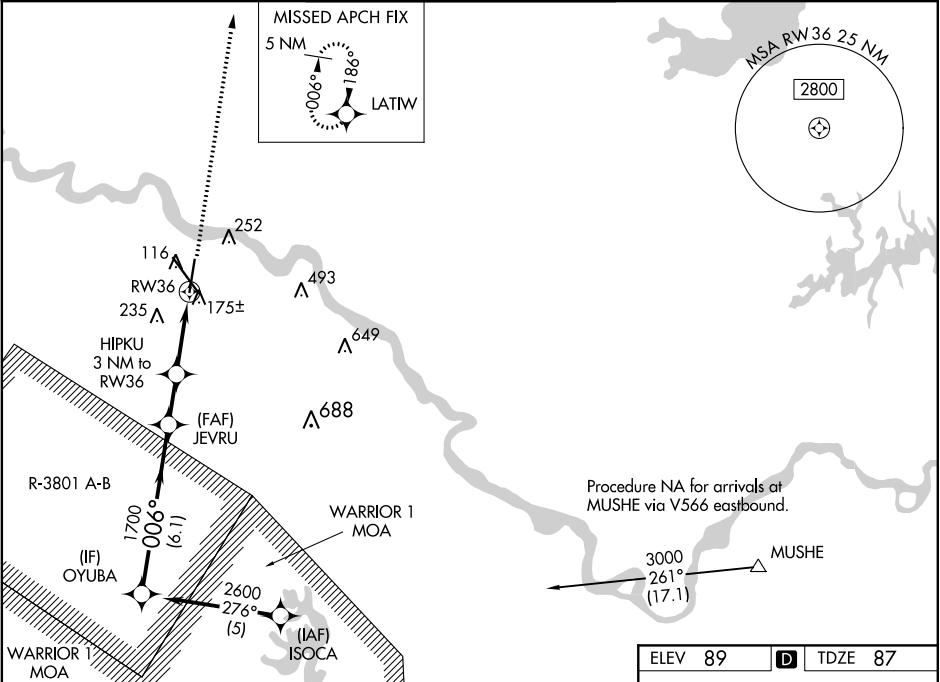


WAAS CH <b>58100</b> <b>W36A</b>	APP CRS <b>006°</b>	Rwy Idg <b>7001</b> TDZE <b>87</b> Apt Elev <b>89</b>	<b>RNAV (GPS) RWY 36</b> ALEXANDRIA INTL (AEX)
--	------------------------	---	---

DME/DME RNP-0.3 NA. When R-3801 A-B in use, procedure NA. For uncompensated Baro-VNAV systems, LNAV/VNAV NA below -15°C (5°F) or above 48°C (119°F). Rwy 36 helicopter visibility reduction below ¾ SM NA.

MISSED APPROACH: Climb to 2600 direct LATIW and hold.

ASOS <b>123.975</b>	POLK APP CON <b>125.4 254.8</b>	ALEXANDRIA TOWER <b>127.35</b> (CTAF) <b>269.2</b>	GND CON <b>121.9 372.0</b>	CLNC DEL <b>121.9</b>
------------------------	------------------------------------	---	-------------------------------	--------------------------



OYUBA		VGSI and RNAV glidepath not coincident (VGSI Angle 3.00/TCH 77).		2600	LATI W
2600		JEVRU		* LNAV only.	
Procedure Turn NA		HIPKU 3 NM to RW36		* 1.1 NM to RW36	
GP 3.00° TCH 55		RW36			
6.1 NM		1.8 NM		1.9 NM	
1.1					
CATEGORY	A	B	C	D	
LPV DA	391-1		304 (400-1)		
LNAV/VNAV DA	425-1¼		338 (400-1¼)		
LNAV MDA	500-1	413 (500-1)	500-1¼	413 (500-1¼)	
CIRCLING	540-1¼ 451 (500-1¼)	560-1¼ 471 (500-1¼)	560-1½ 471 (500-1½)	640-2 551 (600-2)	

ELEV 89

D

TDZE 87

006° to RW36

REIL Rwy 18, 32 and 36  
HIRL Rwy 18-36 and 14-32