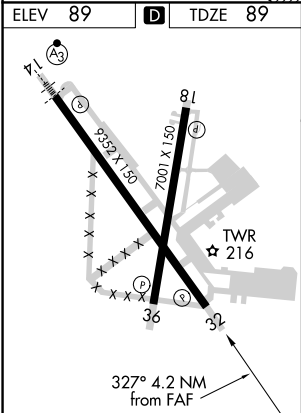
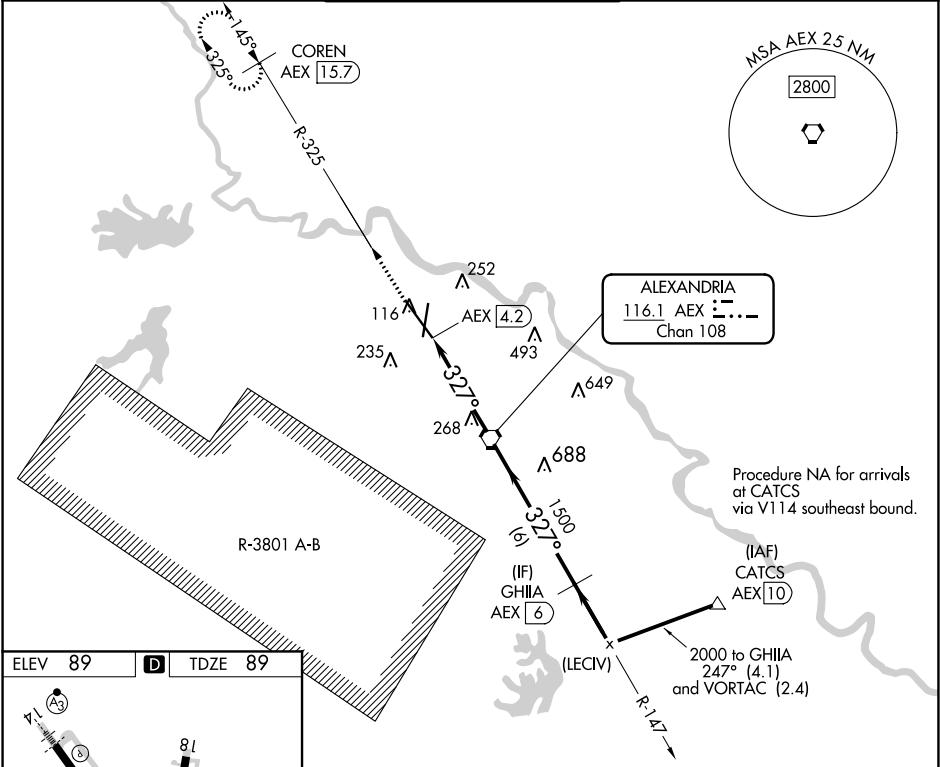


VORTAC AEX	APP CRS	Rwy Idg	9352
116.1	327°	TDZE	89
Chan 108		Apt Elev	89

VOR/DME RWY 32
ALEXANDRIA INTL (AEX)

RADAR required when R-3801 A-B in use.		MISSED APPROACH: Climb to 3000 via AEX R-325 to COREN/AEX 15.7 DME and hold.	
--	--	--	--

ASOS 123.975	POLK APP CON 125.4 254.8	ALEXANDRIA TOWER 127.35 (CTAF) 269.2	GND CON 121.9 372.0	CLNC DEL 121.9
------------------------	------------------------------------	--	-------------------------------	--------------------------



REIL Rwy 18, 32 and 36
HIRL Rwy 18-36 and 14-32

<div>3000 ↑ AEX R-325</div>		<div>COREN AEX 15.7</div>	VGSI and descent angles not coincident (VGSI Angle 3.00/TCH 64).				<div>GH1A AEX 6</div>	(LECIV)	<div>CATCS AEX 10</div>
<div>AEX 4.2</div>		<div>AEX 3</div>	<div>AEX VORTAC</div>						
<div>327°</div>		<div>327°</div>	<div>327°</div>		<div>327°</div>		<div>247°</div>	<div>2000</div>	
<div>1.2</div>		<div>3 NM</div>		<div>6 NM</div>		<div>2.4 NM</div>		<div>4.1 NM</div>	
<div>3.06° TCH 55</div>		<div>1500</div>		<div>2000</div>		<div>2000</div>		<div>Procedure Turn NA</div>	
CATEGORY		A		B		C		D	
S-32		520/50 431 (500-1)		520/60 431 (500-1¼)		520-1½ 431 (500-1½)			
CIRCLING		540-1 451 (500-1)		560-1 471 (500-1)		560-1½ 471 (500-1½)		640-2 551 (600-2)	