

LOC/DME I-BTR <u>110.3</u> Chan 40	APP CRS 133°	Rwy Idg 6408 TDZE 67 Apt Elev 70
--	------------------------	---

ILS or LOC RWY 13

Baton Rouge Metropolitan, Ryan Field (BTR)


 TASR

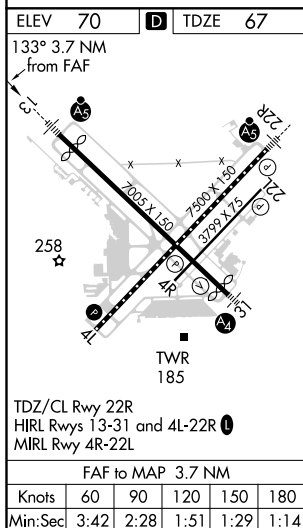
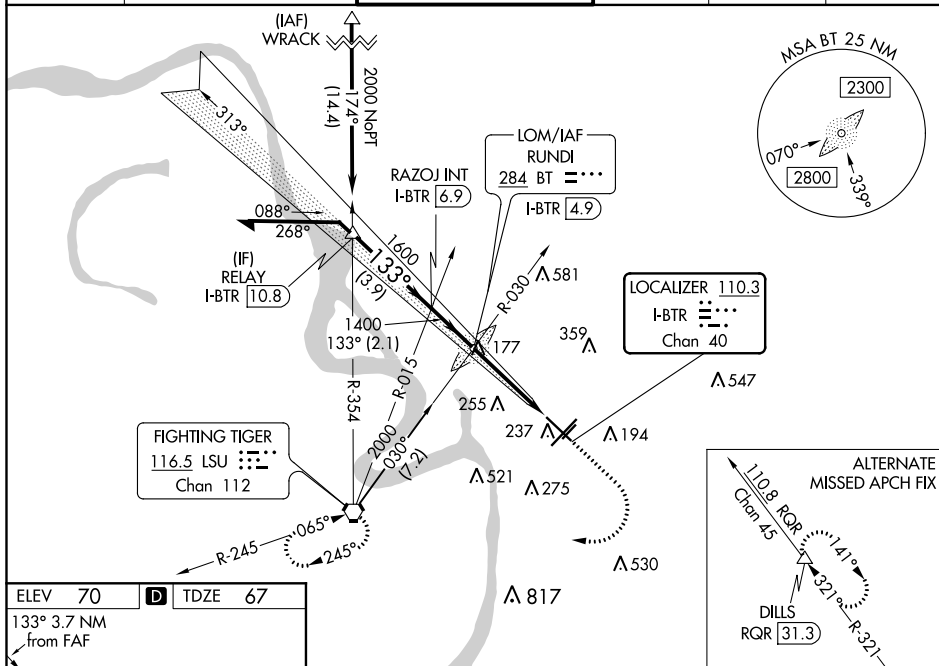
For inop MALSR when using Hammond altimeter setting, increase S-ILS 13 all Cats visibility to $\frac{7}{8}$ mile, and S-LOC 13 visibility to $1\frac{1}{8}$ mile. VDP NA with Hammond altimeter setting. When local altimeter setting not received, use Hammond altimeter setting and increase all DA 91 feet and all MDA 100 feet, increase S-LOC 13 Cats C and D visibility $\frac{1}{4}$ mile, increase Circling Cats C and D visibility $\frac{1}{4}$ mile. For inop MALSR, increase S-LOC 13 Cats C and D to $1\frac{1}{8}$ mile.

MALSR



MISSED APPROACH:
Climb to 700 then
climbing right turn to
2000 direct LSU
VORTAC and hold.

ATIS 125.2	BATON ROUGE APP CON ★ 120.3 278.3	RYAN TOWER ★ 118.45 (CTAF) 0 257.8	GND CON 121.9	CLNC DEL 119.4	UNICOM 122.95
---------------	--------------------------------------	---------------------------------------	------------------	-------------------	------------------



Remain within 10 NM

RUNDI LOM/INT I-BTR 4.9

1321

2000

RAZOJ INT I-BTR 6.9

1600

1733°

1400

GS 3.00° TCH 57

2.1 NM

2.7 NM

1 NM

700

2000

LSU

*LOC only.

Use I-BTR DME when on the localizer course.

*I-BTR 2.2

I-BTR 1.1

CATEGORY	A	B	C	D
S-ILS 13	267-1/2 200 (200-1/2)			
S-LOC 13	480-1/2	413 (500-1/2)	480-3/4	413 (500-3/4)
C CIRCLING	560-1 490 (500-1)	660-1 590 (600-1)	780-2 710 (800-2)	840-2 1/2 770 (800-2 1/2)

Baton Rouge, Louisiana

Amdt 28 20AUG15

Baton Rouge Metropolitan, Ryan Field (BTR)

30°32'N-91°09'W

ILS or LOC RWY 13