

WAAS CH 72817 W13A	APP CRS 133°	Rwy Idg 6408 TDZE 67 Apt Elev 70
--	------------------------	---

RNAV (GPS) RWY 13

Baton Rouge Metropolitan, Ryan Field (BTR)

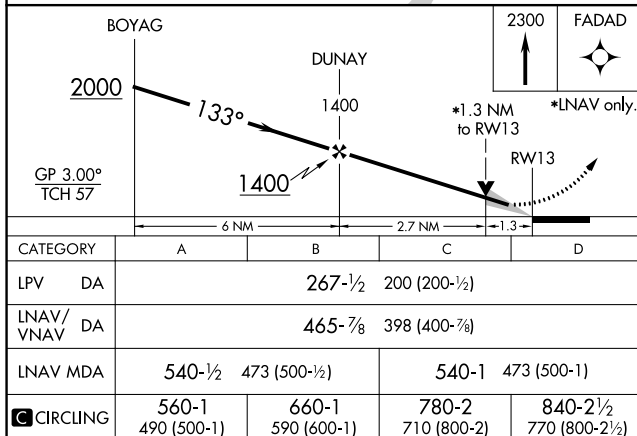
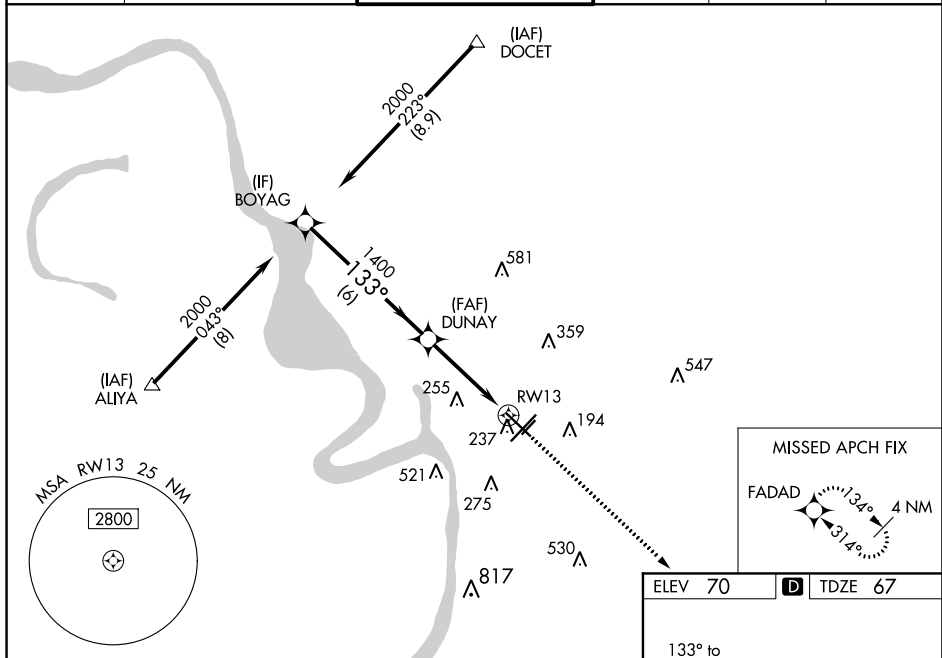
T For uncompensated Baro-VNAV systems, LNAV/VNAV NA below -5°C (23°F) or above 54°C (130°F). DME/DME RNP-0.3 NA. When local altimeter setting not received, use Hammond altimeter setting and increase all DA 91 feet and all MDA 100 feet, and increase LNAV/VNAV all Cats visibility ¼ mile, and LNAV Cats C and D visibility ⅓ mile. For inop MALSR when using Hammond altimeter setting, increase LPV all Cts visibility to ⅓ mile, LNAV Cat C and D visibility to 1 ½ mile. Baro-VNAV and VDP NA when using Hammond altimeter setting.


MALS



MISSED APPROACH: Climb to 2300 direct FADAD and hold.

ATIS 125.2	BATON ROUGE APP CON ★ 120.3 278.3	RYAN TOWER ★ 118.45 (CTAF) 0 257.8	GND CON 121.9	CLNC DEL 119.4	UNICOM 122.95
----------------------	---	--	-------------------------	--------------------------	-------------------------



CATEGORY		A	B	C	D
LPV	DA	267-1/2		200 (200-1/2)	
LNAV/ VNAV	DA	465-7/8		398 (400-7/8)	
LNAV	MDA	540-1/2	473 (500-1/2)	540-1	473 (500-1)
 CIRCLING		560-1 490 (500-1)	660-1 590 (600-1)	780-2 710 (800-2)	840-2 1/2 770 (800-2 1/2)

