

| | | |
|--|------------------------|---|
| WAAS CH 86225 W22A | APP CRS 224° | Rwy Idg 7500 TDZE 70 Apt Elev 70 |
|--|------------------------|---|

RNAV (GPS) RWY 22R
BATON ROUGE METROPOLITAN, RYAN FIELD (BTR)

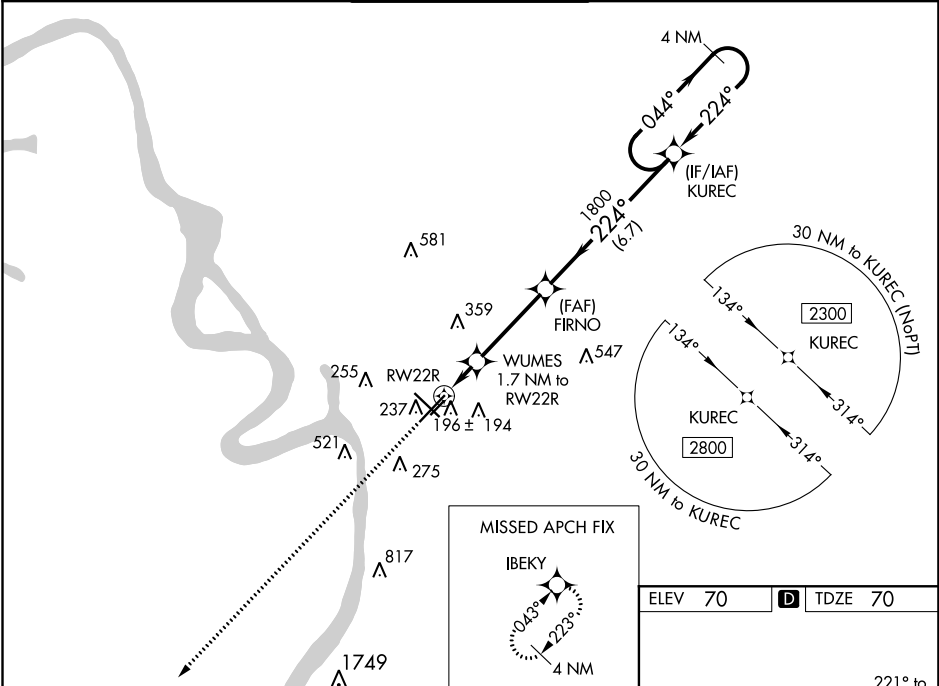
Baro-VNAV NA when using Hammond altimeter setting. For uncompensated Baro-VNAV systems, LNAV/VNAV NA below -5°C (23°F) or above 54°C (130°F). DME/DME RNP-0.3 NA. VDP NA with Hammond altimeter setting. When local altimeter setting not received, use Hammond altimeter setting and increase all DA 91 feet, and all MDA 100 feet; increase LNAV/VNAV all Cats visibility 3/8 mile, LNAV Cat C/D visibility to RVR 5000, and Circling Cat C/D visibility 1/4 mile. For inop MALSR when using Hammond altimeter setting, increase LPV all Cats visibility to RVR 4500, and LNAV C/D visibility to 1 1/8 mile.

ASR

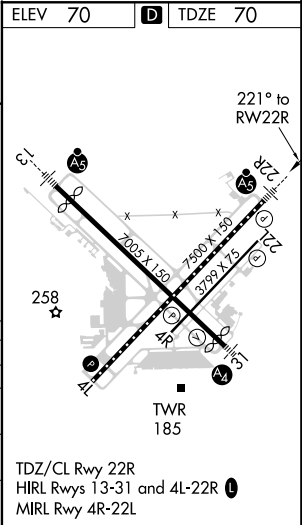
MALSR

MISSED APPROACH:
Climb to 2800 direct
IBEKY and hold.

| | | | | | |
|----------------------|---|--|-------------------------|--------------------------|-------------------------|
| ATIS 125.2 | BATON ROUGE APP CON ★ 120.3 278.3 | RYAN TOWER ★ 118.45 (CTAF) 0 257.8 | GND CON 121.9 | CLNC DEL 119.4 | UNICOM 122.95 |
|----------------------|---|--|-------------------------|--------------------------|-------------------------|



| | | | | | |
|--------------|----------------------|----------------------|----------------------|------------------------------|--------|
| 2800 | IBEKY | | | | |
| *LNAV only. | WUMES | FIRNO | KUREC | 4 NM Holding Pattern | |
| | *1.1 NM to RW22R | 1.7 NM to RW22R | 1800 | 044° | 2300 |
| | | | | 224° | |
| | | | | GP 3.00° | TCH 55 |
| | 1.1 | 0.6 | 3.6 NM | 6.7 NM | |
| CATEGORY | A | B | C | D | |
| LPV DA | 270/18 | | 200 (200-1/2) | | |
| LNAV/VNAV DA | 486/45 | | 416 (500-7/8) | | |
| LNAV MDA | 460/24 | 390 (400-1/2) | 460/35 | 390 (400-3/8) | |
| CIRCLING | 560-1 490 (500-1) | 660-1 590 (600-1) | 780-2 710 (800-2) | 840-2 1/2 770 (800-2 1/2) | |



SC-4, 03 DEC 2020 to 31 DEC 2020

SC-4, 03 DEC 2020 to 31 DEC 2020