

| | | |
|--|------------------------|---|
| WAAS CH 81825 W04A | APP CRS 043° | Rwy Idg 7500 TDZE 69 Apt Elev 70 |
|--|------------------------|---|

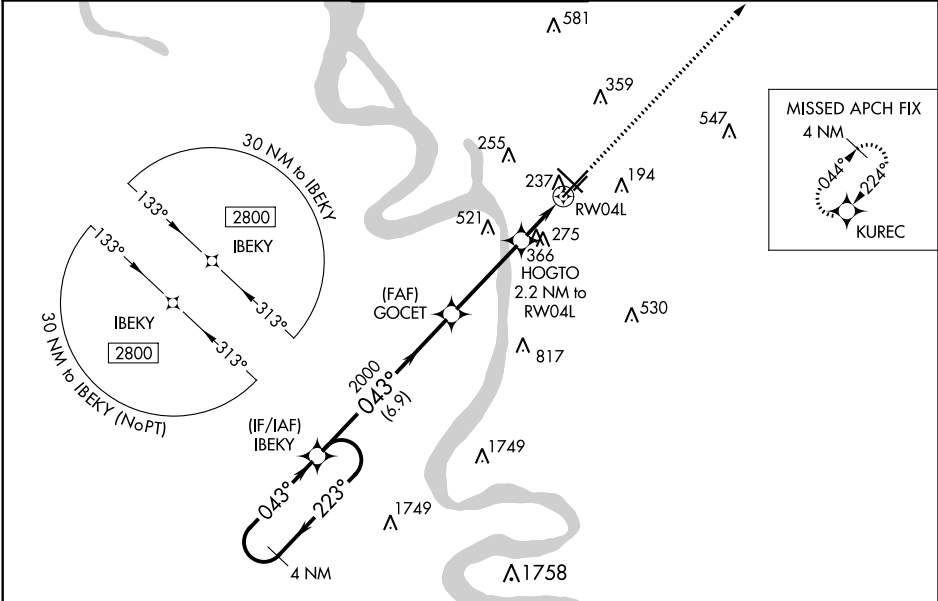
RNAV (GPS) RWY 4L

BATON ROUGE METROPOLITAN, RYAN FIELD (BTR)

⚠ For uncompensated Baro-VNAV systems, LNAV/VNAV NA below -5°C (23°F) or above 54°C (130°F).
⚠ DME/DME RNP-0.3 NA. Baro-VNAV and VDP NA when using Hammond altimeter setting. When local altimeter setting not received, use Hammond altimeter setting and increase all DA 91 feet and all MDA 100 feet; increase LPV visibility ¼ mile all Cats, LNAV/VNAV visibility ½ mile all Cats and LNAV Cat C/D visibility ¼ mile, Circling Cat C/D visibility ¼ mile. Helicopter visibility reduction below ¾ SM NA.

MISSED APPROACH:
Climb to 2300 direct KUREC and hold.

| | | | | | |
|----------------------|---|--|-------------------------|--------------------------|-------------------------|
| ATIS 125.2 | BATON ROUGE APP CON ★ 120.3 278.3 | RYAN TOWER ★ 118.45 (CTAF) 257.8 | GND CON 121.9 | CLNC DEL 119.4 | UNICOM 122.95 |
|----------------------|---|--|-------------------------|--------------------------|-------------------------|



ELEV 70 **D** **TDZE 69**

4 NM Holding Pattern

IBEKY

2800 ← 223° / 043° →

GP 3.00° TCH 55

GOCET 2000

HOGTO 2.2 NM to RW04L

*1.6 NM to RW04L

*820

2300 KUREC

*LNAV only.

| CATEGORY | A | B | C | D |
|-----------------|-----------------------|-------------------------|-------------------|---------------------------|
| LPV DA | 345-7/8 276 (300-7/8) | | | |
| LNAV/VNAV DA | 656-2 587 (600-2) | | | |
| LNAV MDA | 620-1 551 (600-1) | 620-15/8 551 (600-15/8) | | |
| CIRCLING | 620-1 550 (600-1) | 660-1 590 (600-1) | 780-2 710 (800-2) | 840-2 1/2 770 (800-2 1/2) |

TDZ/CL Rwy 22R

HIRL Rwys 13-31 and 4L-22R **1**

MIRL Rwy 4R-22L

RNAV (GPS) RWY 4L

SC-4, 03 DEC 2020 to 31 DEC 2020

SC-4, 03 DEC 2020 to 31 DEC 2020