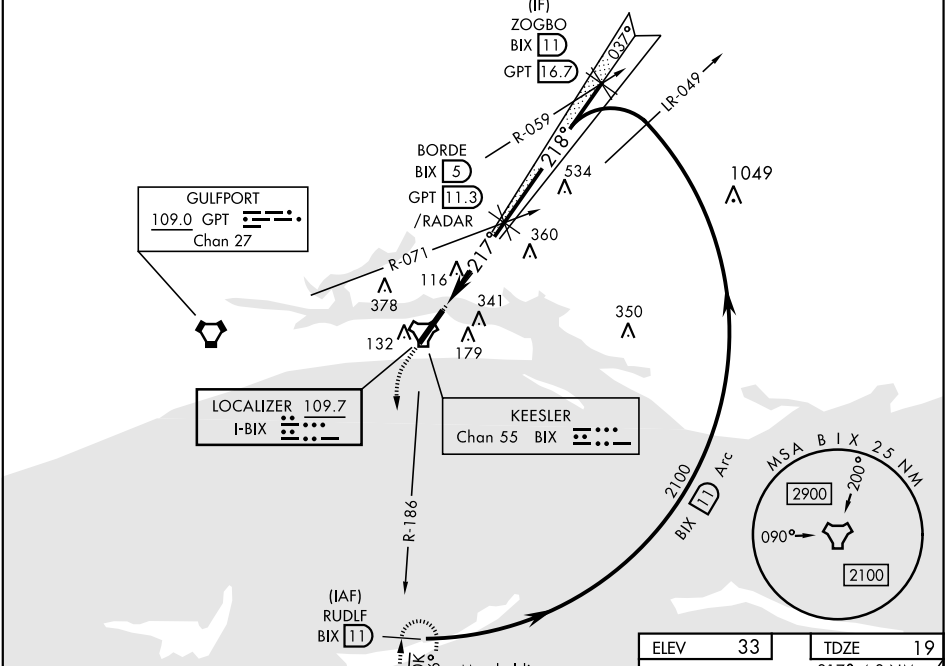


BILOXI, MISSISSIPPI

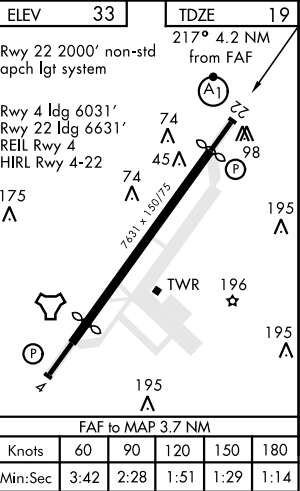
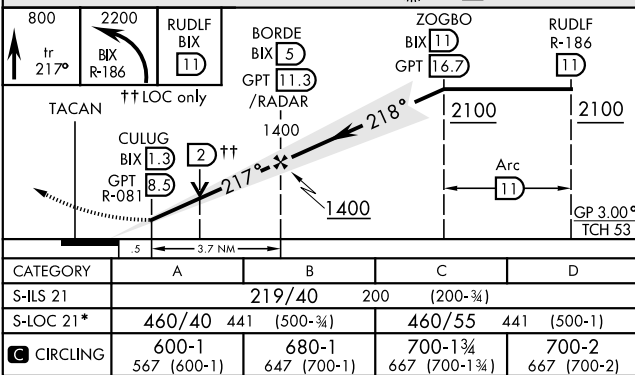
ILS or LOC RWY 22

LOC I-BIX 109.7	APCH CRS 217°	Rwy ldg TDZE Arprt Elev 6631 19 33	AL-49 [USAF]	KEESLER AFB (KBIX)
* When ALS inop, increase CAT AB RVR to 55, vis to 1 mile, CAT CD vis to 1½ miles.			ALS-F1 	† MISSED APPROACH: Climb to 800 tracking 217°, upon reaching 800 turn left to intercept BIX TACAN R-186 climbing to 2200 to 11 DME (RUDLF) and hold.
ATIS 281.55	GULFPORT APP CON 124.6 354.1 (130°- 309°) 127.5 254.25 (310°- 129°)	KEESLER TOWER ★ 120.75 269.075	GND CON 121.8 275.8	CLNC DEL 121.8 275.8

† Missed approach requires use of RNAV or ATC RADAR monitoring.
Non-TACAN equipped aircraft expect ATC instructions.



RADAR or DME REQUIRED
EMERG SAFE ALT 100 NM 3100



BILOXI, MISSISSIPPI

Orig 27FEB20

30° 25' N-88° 55' W

KEESLER AFB (KBIX)

ILS or LOC RWY 22

SC-4, 03 DEC 2020 to 31 DEC 2020

SC-4, 03 DEC 2020 to 31 DEC 2020