

TACAN RWY 22

TACAN BIX Chan 55	APCH CRS 222°	Rwy Idg 6631 TDZE 19 Arpt Elev 33
-----------------------------	-------------------------	--

AL-49 [USAF]

KEESLER AFB (KBIX)

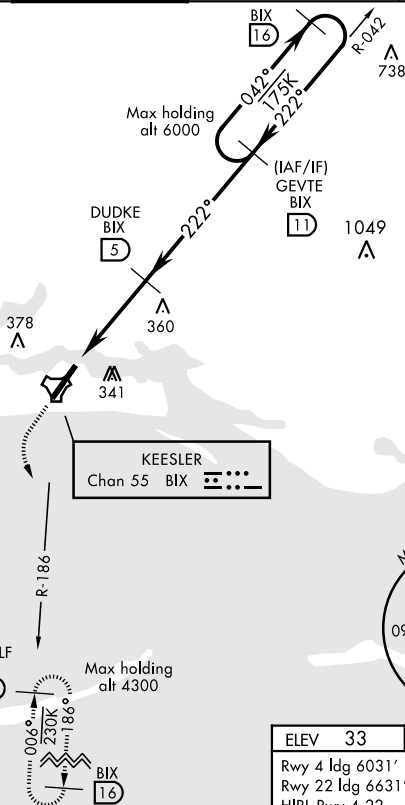
T * When ALS inop, increase CAT AB RVR to 55, vis to 1 mile; CAT CD vis to 1¾ miles.



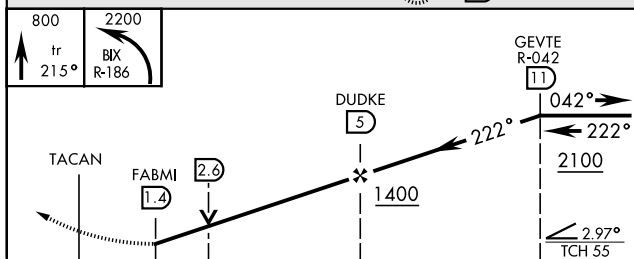
† MISSED APPROACH: Climb to 800 tracking 215°, then turn left to intercept BIX R-186 to 11 DME (RUDLF) climbing to 2200 and hold.

ATIS 281.55	GULFPORT APP CON 124.6 354.1 (130°- 309°) 127.5 254.25 (310°- 129°)	KEESLER TOWER ★ 120.75 269.075	GND CON 121.8 275.8	CLNC DEL 121.8 275.8
----------------	---	-----------------------------------	------------------------	-------------------------

† Missed Approach requires use of RNAV or ATC RADAR monitoring.



EMERG SAFE ALT 100 NM 3100



		.6	3.6 NM			
CATEGORY	A		B		C	D
S-22*	640/40		621	(700-¾)	640-1½	621 (700-1½)
CIRCLING	640-1		680-1		700-1¾	700-2
	607 (700-1)		647 (700-1)		667 (700-1¾)	667 (700-2)

