

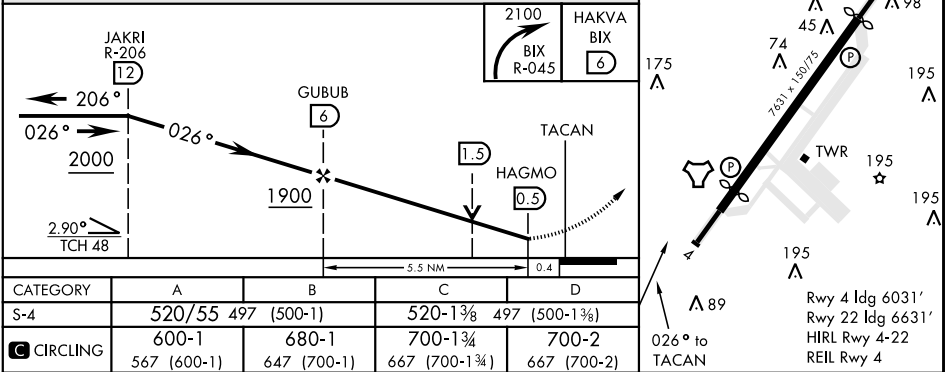
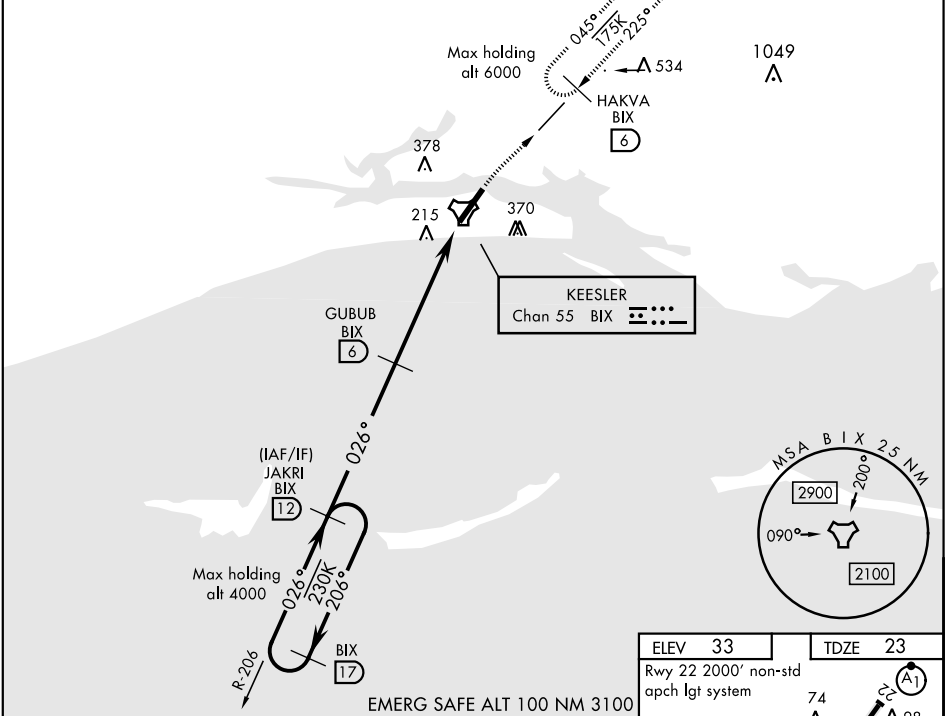
TACAN RWY 4

TACAN BIX Chan 55	APCH CRS 026°	Rwy ldg TDZE Arprt Elev	6031 23 33	AL-49 [USAF]	KEESLER AFB (KBIX)
----------------------	------------------	-------------------------------	------------------	--------------	--------------------

† MISSED APPROACH: Turn right climbing to 2100 to intercept BIX TACAN R-045 to 6 DME (HAKVA) and hold.

ATIS 281.55	GULFPORT APP CON 124.6 354.1 (130°- 309°) 127.5 254.25 (310°- 129°)	KEESLER TOWER ★ 120.75 269.075	GND CON 121.8 275.8	CLNC DEL 121.8 275.8
----------------	---	-----------------------------------	------------------------	-------------------------

† Missed Approach requires use of RNAV or ATC RADAR monitoring.  
Visibility reduction by helicopters NA.



TACAN RWY 4

SC-4, 03 DEC 2020 to 31 DEC 2020

SC-4, 03 DEC 2020 to 31 DEC 2020