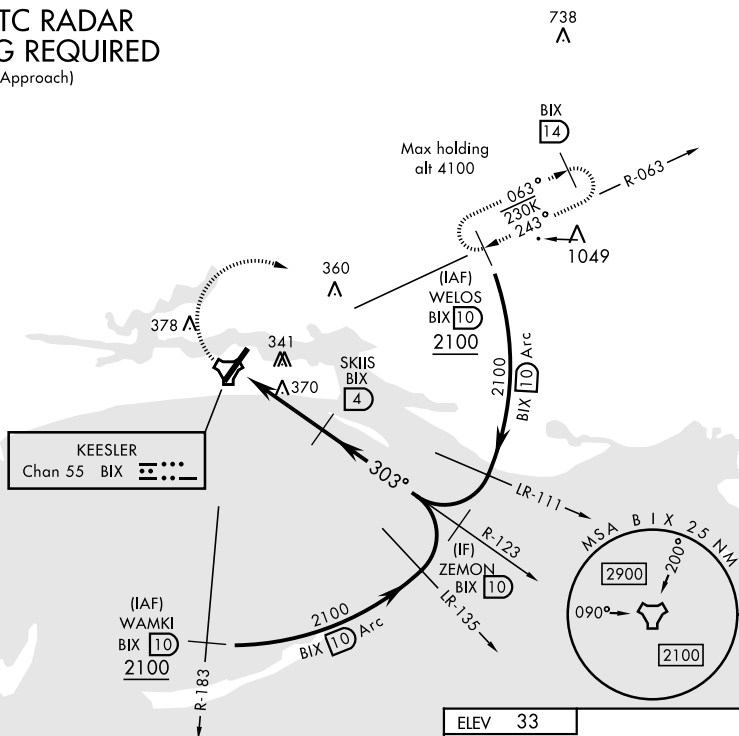


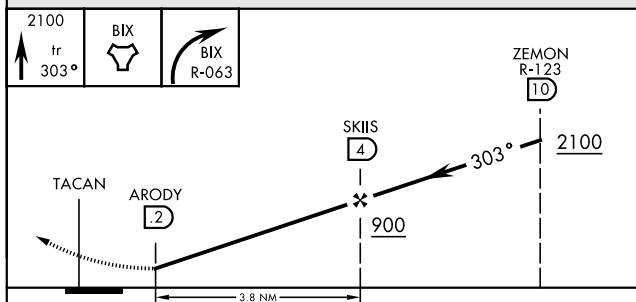
TACAN BIX Chan 55	APCH CRS 303°	Rwy Idg THRE Arpt Elev N/A N/A 33	AL-49 [USAF]	KEESLER AFB (KBIX)
<div>▼</div> <p>MISSED APPROACH: Climb tracking 303° to BIX TACAN then right turn to intercept BIX R-063 climbing to 2100 to 10 DME (WELOS) and hold.</p>				
ATIS 281.55	GULFPORT APP CON 124.6 354.1 (130°- 309°) 127.5 254.25 (310°- 129°)		KEESLER TOWER ★ 120.75 269.075	GND CON 121.8 275.8
		CLNC DEL 121.8 275.8		

RNAV or ATC RADAR  
MONITORING REQUIRED

(For Missed Approach)



EMERG SAFE ALT 100 NM 3100



CATEGORY	A	B	C	D
<input checked="" type="checkbox"/> CIRCLING	640-1 607 (700-1)	680-1 647 (700-1)	700-1 <del>3</del> 667 (700-1 <del>3</del> )	700-2 667 (700-2)

