

COLUMBUS, MISSISSIPPI

HI-ILS or LOC Z RWY 13C

LOC I-CBM	APCH CRS	Rwy Idg	12,004	8001		
<u>109.3</u>	<u>135°</u>	TDZE	196	194	JAL-91 [USAF]	COLUMBUS AFB (KCBM)
		Arpt Elev	218	218		

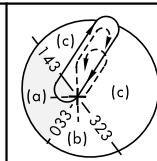
**T**\* When ALS inop, increase RVR to 40, vis to  $\frac{3}{4}$  mile.  
 \*\* When ALS inop. increase vis to  $1\frac{3}{8}$  miles.



**MISSED APPROACH:** Climb heading 135° to intercept the CBM VORTAC R-135 outbound to WEEWA (CBM R-135/20) and hold. Maintain 4000

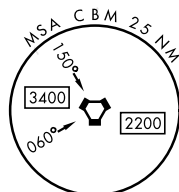
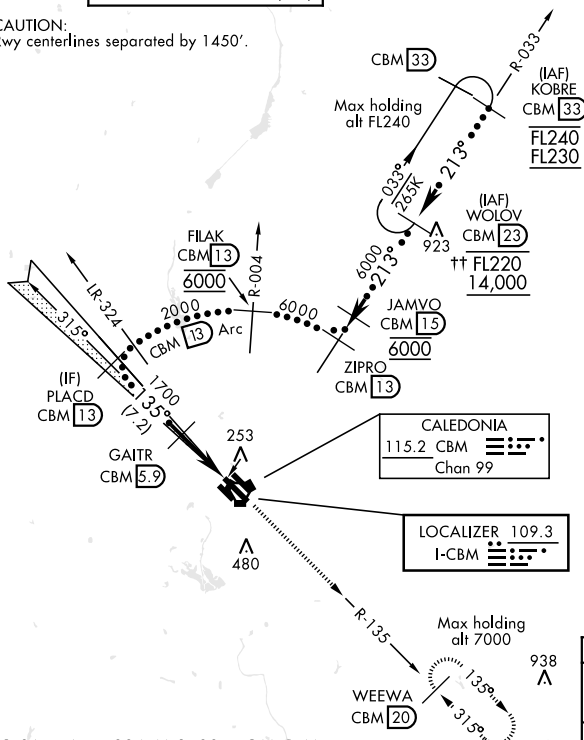
ATIS 115.2 273.5	COLUMBUS APP CON 126.075 239.25 (N) 134.55 350.3 (SE) 135.6 323.275 (SW)	COLUMBUS TOWER 126.65 379.925	GND CON 121.9 275.8	CLNC DEL 269.55
---------------------	-----------------------------------------------------------------------------------	----------------------------------	------------------------	--------------------

\*\*\* CAUTION:  
Rwy centerlines separated by 1450'.

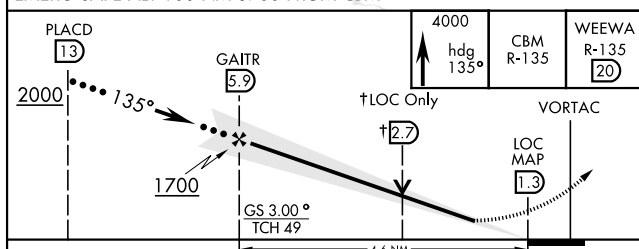


886

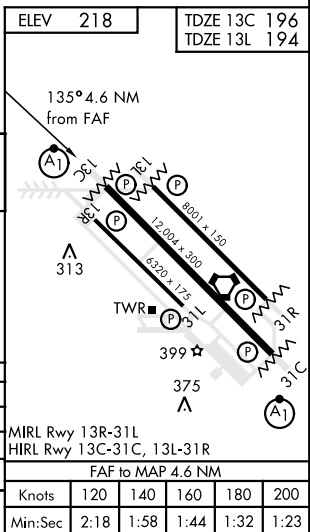
†† Altitude restriction only applies when WOLOV is IAF.



EMERG SAFE ALT 100 NM 3700 FROM CBM



CATEGORY	C	D	E
S-ILS 13C *	396/24	200	(200-½)
S-LOC 13C **	680/50	484	(500-1)
SIDESTEP *** RWY 13L	680-1⅙	486	(500-1⅙)
<b>C</b> CIRCLING	760-1½ 542 (600-1½)	780-2 562 (600-2)	1220-3 1002 (1100-3)



COLUMBUS, MISSISSIPPI

33° 39'N-88° 27'W

COLUMBUS AFB (KCBM)

Amdt 1 13AUG20

HI-ILS or LOC Z RWY 13C

SC-4, 03 DEC 2020 to 31 DEC 2020

SC-4, 03 DEC 2020 to 31 DEC 2020