

LOC I-CBM <u>109.3</u>	APCH CRS 135°	Rwy Idg 12,004 8001 TDZE 196 194 Arpt Elev 218 218
----------------------------------	-------------------------	--

COLUMBUS AFB (KCBM)

T * When ALS inop, increase RVR to 40, vis to $\frac{3}{4}$ mile.
 ** When ALS inop, increase CAT AB RVR to 55, vis to 1 mile, CAT CDE vis to $1\frac{3}{4}$ miles.



MISSED APPROACH: Climb heading 135° to intercept the CBM VORTAC R-135 outbound to WEEWA (CBM R-135/20) and hold. Maintain 4000

ATIS
115.2 273.5

	COLUMBUS APP CON	
SE	134.55	350.3
SW	135.6	323.275
N	126.075	239.25

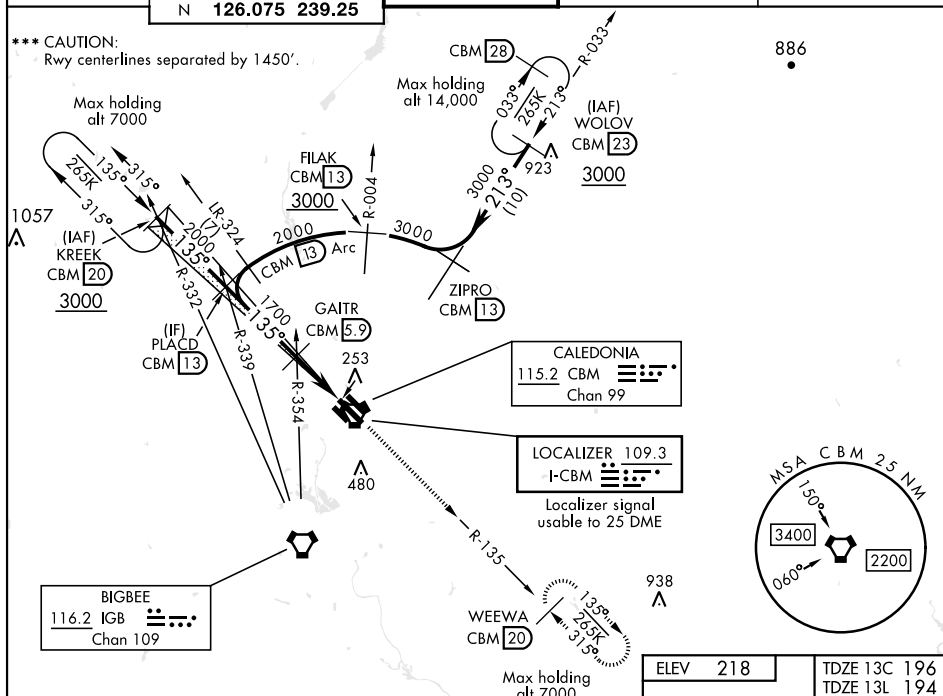
COLUMBUS TOWER
126.65 379.925

GND CON
121.9 275.8

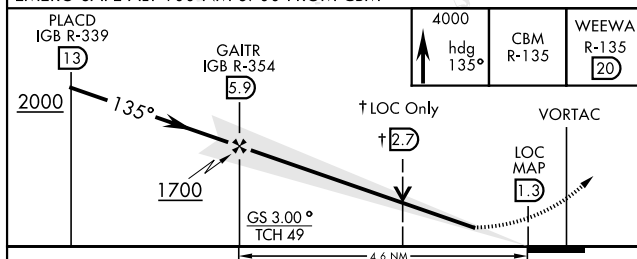
CLNC DEL
269,55

*** CAUTION:

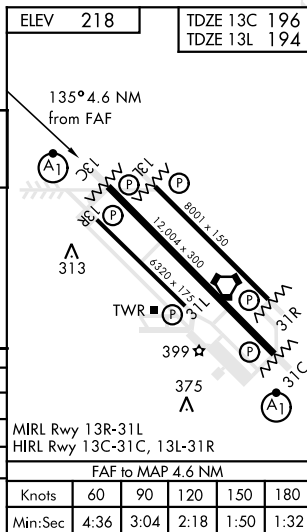
Rwy centerlines separated by 1450'.



EMERG SAFE ALT 100 NM 3700 FROM CBM



CATEGORY	A	B	C	D	E
S-ILS 13C *	396/24		200	(200-½)	
S-LOC 13C **	680/24	484 (500-½)	680/50		484 (500-1)
SIDESTEP RWY 13L ***	680/55	486 (500-1)	680-1 384		486 (500-1½)
C CIRCLING	740-1	522 (600-1)	760-1 ½ 542 (600-1½)	780-2 562 (600-2)	1220-3 1002 (1100-3)



COLUMBUS, MISSISSIPPI

33°39'N-88°27'W

COLUMBUS AFB (KCBM)

Amdt 1 13AUG20

ILS or LOC Y RWY 13C

SC-4, 03 DEC 2020 to 31 DEC 2020