

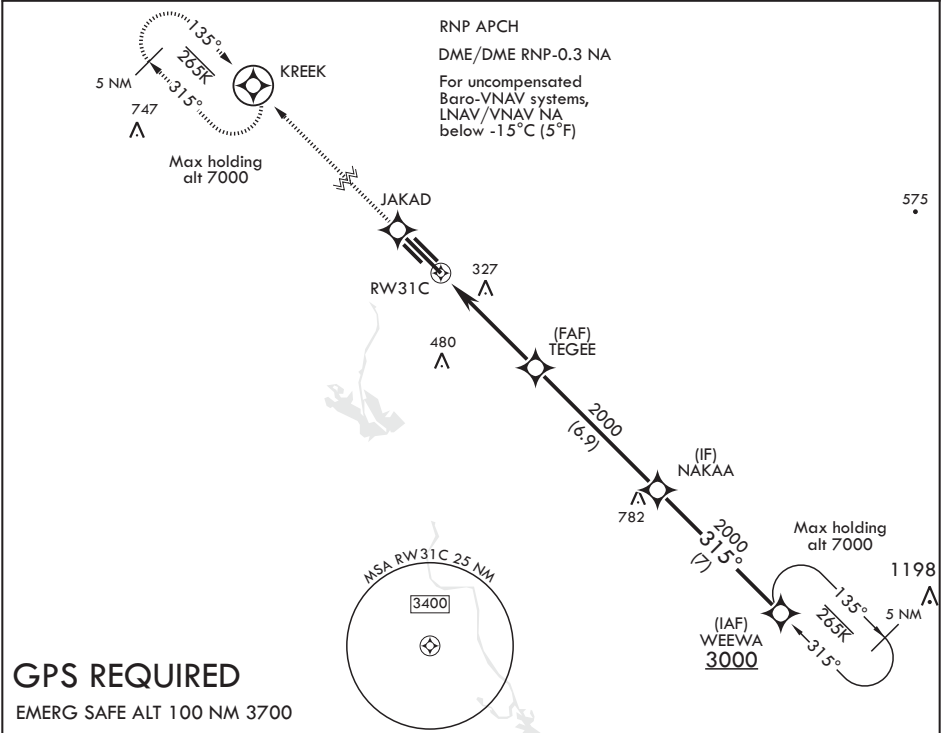
APCH CRS	Rwy Idg	12,004
315°	TDZE	213
	Arpt Elev	218

AL-91 (USAF)

COLUMBUS AFB (KCBM)

<p>▼ * When ALS inop, increase vis to 1 1/4 miles. ** When ALS inop, increase CAT AB RVR to 55, vis to 1 mile; CAT CDE vis to 1 3/4 miles.</p>	<p>ALSF-1</p>	<p>MISSED APPROACH: Climb to 4000 direct JAKAD, direct KREEK and hold.</p>
--	---------------	--

ATIS 115.2 273.5	APP CON 126.075 239.25 N 134.55 350.3 SE 135.6 323.275 SW	TOWER 126.65 379.925	GND CON 121.9 275.8	CLNC DEL 269.55
---------------------	--	-------------------------	------------------------	--------------------



GPS REQUIRED

EMERG SAFE ALT 100 NM 3700

