

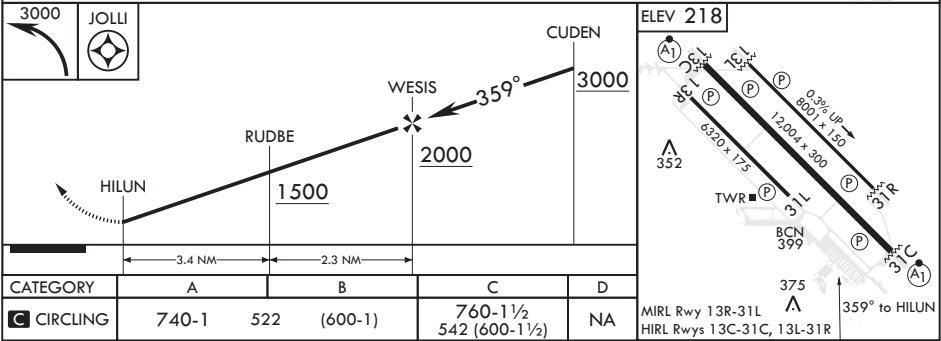
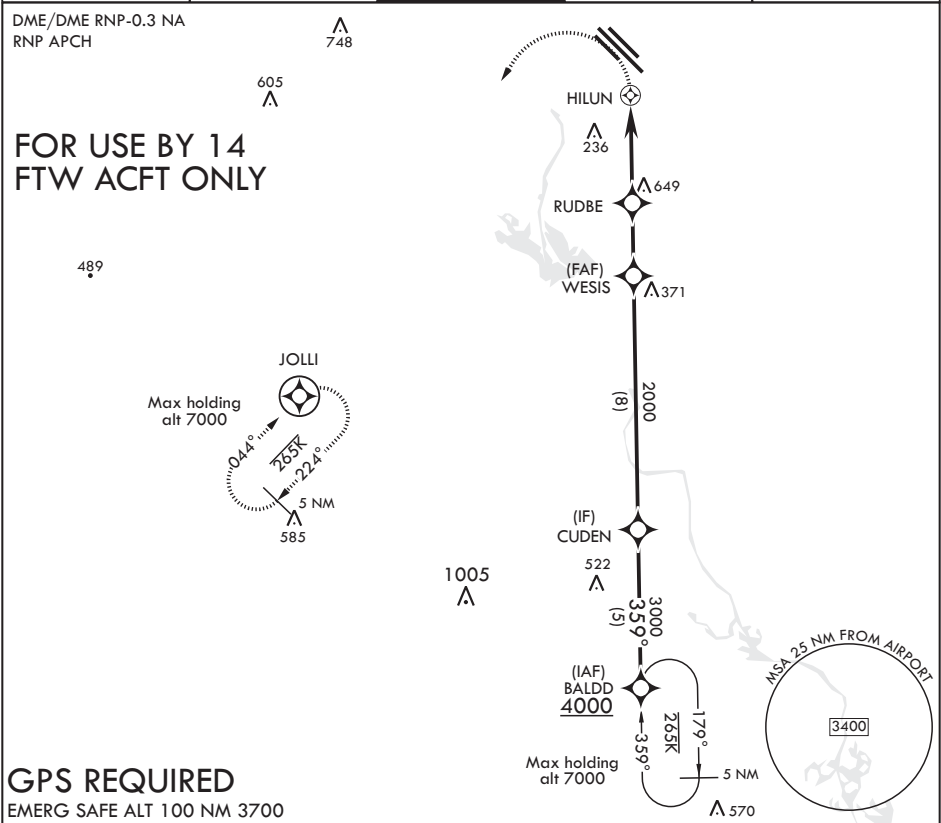
APCH CRS 359°	Rwy Idg TDZE Arprt Elev	N/A N/A 218
------------------	-------------------------------	-------------------

AL-91 (USAF)

COLUMBUS AFB (KCBM)

	MISSED APPROACH: Climbing left turn to 3000 direct JOLLI and hold.
--	--

ATIS 115.2 273.5	APP CON 126.075 239.25 N 134.55 350.3 SE 135.6 323.275 SW	TOWER 126.65 379.925	GND CON 121.9 275.8	CLNC DEL 269.55
---------------------	--	-------------------------	------------------------	--------------------



SC-4, 03 DEC 2020 to 31 DEC 2020

SC-4, 03 DEC 2020 to 31 DEC 2020