

NDB DXB	APP CRS	Rwy Idg	5495
385	354°	TDZE	197
		Apt Elev	202

NDB RWY 36

BEAUREGARD RGNL (DRI)

▼

NA

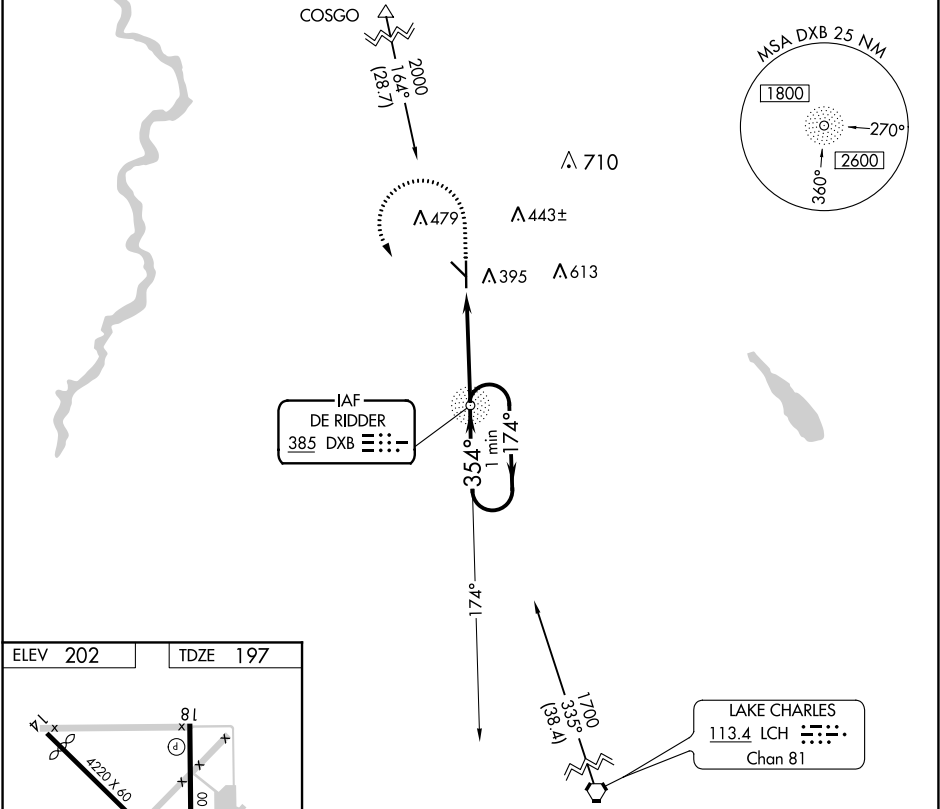
Inoperative table does not apply. Visibility reduction by helicopters NA. When local altimeter setting not received, use Fort Polk altimeter setting and increase all MDA 60 feet, and S-36 visibility Cat D ¼ mile.

ODALS

⋮

MISSED APPROACH: Climb to 1000 then climbing left turn to 1700 direct DXB NDB and hold.

AWOS-3PT	POLK APP CON	UNICOM
118.225	123.7 261.3	122.8 (CTAF) 0



ELEV 202 TDZE 197

FAF to MAP 4.2 NM

Knots	60	90	120	150	180
Min:Sec	4:12	2:48	2:06	1:41	1:24

1000	1700	DXB	DXB NDB	One Minute Holding Pattern
		1700 ← 354°		
		VGSI and descent angles not coincident (VGSI Angle 3.00/TCH 50).		
CATEGORY	A	B	C	D
S-36	700-1	503 (500-1)	700-1½	503 (500-1½)
CIRCLING	720-1	518 (600-1)	720-1½	780-2
			518 (600-1½)	578 (600-2)

SC-4, 03 DEC 2020 to 31 DEC 2020

SC-4, 03 DEC 2020 to 31 DEC 2020